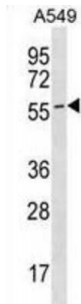


Endothelial Cell Adhesion Molecule (ESAM) Antibody

Catalogue No.: abx030442



ESAM can mediate aggregation most likely through a homophilic molecular interaction (By similarity).

Target: ESAM

Reactivity: Human

Host: Rabbit

Clonality: Polyclonal

Tested Applications: WB

Recommended dilutions: Optimal dilutions/concentrations should be determined by the end user.

Immunogen: Human ESAM.

Purification: Peptide Affinity Purified Rabbit Polyclonal Antibody.

Isotype: IgG

Conjugation: Unconjugated

Specificity: This ESAM antibody is generated from rabbits immunized with a KLH conjugated synthetic peptide between 259-289 amino acids from the C-terminal region of human ESAM.

Storage: Aliquot and store at -20 °C. Avoid repeated freeze/thaw cycles.

Swiss Prot: [Q96AP7](#)

Buffer: PBS with 0.09% (W/V) sodium azide. This antibody is purified through a protein A column, followed by peptide affinity purification.

Note: This product is for research use only.