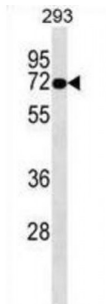


Abbexa Ltd, Innovation Centre, Cambridge Science Park, Cambridge, CB4 0EY, UK
Telephone: +44 (0) 1223 755950 - Fax: +44 (0) 1223 755951 - E-Mail: info@abbexa.com

OTOP2 Antibody

Catalogue No.: abx029730



Otopetrins are multi-transmembrane domain proteins that share conserved gene and protein structure and are possibly involved in the formation of otoconia and otoliths. Located in the utricle and saccule of the inner ear, otoconia are complex calcium carbonate biominerals that are required for the normal sensation of gravity and linear acceleration. Vertigo and loss of balance may be attributed to degeneration or displacement of otoconia. The otopetrin family consists of three proteins, OTOP1, OTOP2 and OTOP3. These proteins have 12 putative transmembrane domains that are clustered into three otopetrin domains (OD-I, II and III). OTOP1 was the first described member of the Otopetrin family. Mutations of OTOP1 leads to absence of otoconia or otoliths, though inner ear development is normal. OTOP2 and OTOP3 share significant structural similarity with OTOP1 and may also play a role in the formation of mineralized structures.

Target: OTOP2

Reactivity: Human

Host: Rabbit

Clonality: Polyclonal

Tested Applications: WB

Recommended dilutions: Optimal dilutions/concentrations should be determined by the end user.

Immunogen: Human OTOP2.

Purification: Peptide Affinity Purified Rabbit Polyclonal Antibody.

Isotype: IgG

Conjugation: Unconjugated

Specificity: This OTOP2 antibody is generated from rabbits immunized with a KLH conjugated synthetic peptide between 336-363 amino acids from the Central region of human OTOP2.

Storage: Aliquot and store at -20 °C. Avoid repeated freeze/thaw cycles.

Abbexa Ltd, Innovation Centre, Cambridge Science Park, Cambridge, CB4 0EY, UK
Telephone: +44 (0) 1223 755950 - Fax: +44 (0) 1223 755951 - E-Mail: info@abbexa.com

Swiss Prot: [Q7RTS6](#)

Gene Symbol: OTOP2

Buffer: PBS with 0.09% (W/V) sodium azide. This antibody is purified through a protein A column, followed by peptide affinity purification.

Note: This product is for research use only.