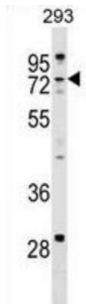


Zinc Finger CCHC Domain-Containing Protein 8 (ZCCHC8) Antibody

Catalogue No.: abx029673



ZCCHC8 may be involved in pre-mRNA splicing.

Target: ZCCHC8

Reactivity: Human

Host: Rabbit

Clonality: Polyclonal

Tested Applications: WB

Recommended dilutions: Optimal dilutions/concentrations should be determined by the end user.

Immunogen: Human ZCCHC8.

Purification: Peptide Affinity Purified Rabbit Polyclonal Antibody.

Isotype: IgG

Conjugation: Unconjugated

Specificity: This ZCCHC8 antibody is generated from rabbits immunized with a KLH conjugated synthetic peptide between 560-590 amino acids from the C-terminal region of human ZCCHC8.

Storage: Aliquot and store at -20 °C. Avoid repeated freeze/thaw cycles.

Swiss Prot: [Q6NZY4](#)

Buffer: PBS with 0.09% (W/V) sodium azide. This antibody is purified through a protein A column, followed by peptide affinity purification.

Note: This product is for research use only.