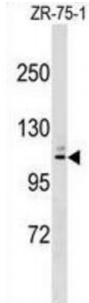


Membrane Associated Ring-CH-Type Finger 10 (MARCH10) Antibody

Catalogue No.: abx029580



MARCH10 is a member of the MARCH family of membrane-bound E3 ubiquitin ligases (EC 6.3.2.19). MARCH enzymes add ubiquitin (see MIM 191339) to target lysines in substrate proteins, thereby signaling their vesicular transport between membrane compartments (Morokuma et al., 2007 [PubMed 17604280]).

Target: Membrane Associated Ring-CH-Type Finger 10 (MARCH10)**Reactivity:** Human**Host:** Rabbit**Clonality:** Polyclonal**Tested Applications:** WB**Recommended dilutions:** Optimal dilutions/concentrations should be determined by the end user.**Immunogen:** Human MARCH10.**Purification:** Peptide Affinity Purified Rabbit Polyclonal Antibody.**Isotype:** IgG**Conjugation:** Unconjugated**Specificity:** This MARCH10 antibody is generated from rabbits immunized with a KLH conjugated synthetic peptide between 248-274 amino acids from the Central region of human MARCH10.**Storage:** Aliquot and store at -20 °C. Avoid repeated freeze/thaw cycles.**Swiss Prot:** [Q8NA82](#)**Buffer:** PBS with 0.09% (W/V) sodium azide. This antibody is purified through a protein A column, followed by peptide affinity purification.

Abbexa Ltd, Innovation Centre, Cambridge Science Park, Cambridge, CB4 0EY, UK
Telephone: +44 (0) 1223 755950 - Fax: +44 (0) 1223 755951 - E-Mail: info@abbexa.com

Note: This product is for research use only.