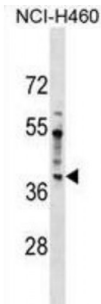


**Serologically Defined Colon Cancer Antigen 8 (SDCCAG8) Antibody**

Catalogue No.: abx029545



This gene encodes a centrosome associated protein. This protein may be involved in organizing the centrosome during interphase and mitosis. Mutations in this gene are associated with retinal-renal ciliopathy.

**Target:** SDCCAG8**Reactivity:** Human**Host:** Rabbit**Clonality:** Polyclonal**Tested Applications:** WB**Recommended dilutions:** Optimal dilutions/concentrations should be determined by the end user.**Immunogen:** Human SDCCAG8.**Purification:** Peptide Affinity Purified Rabbit Polyclonal Antibody.**Isotype:** IgG**Conjugation:** Unconjugated**Specificity:** This SDCCAG8 antibody is generated from rabbits immunized with a KLH conjugated synthetic peptide between 188-215 amino acids from the N-terminal region of human SDCCAG8.**Storage:** Aliquot and store at -20 °C. Avoid repeated freeze/thaw cycles.**Swiss Prot:** [Q86SQ7](#)**Gene Symbol:** SDCCAG8

Abbexa Ltd, Innovation Centre, Cambridge Science Park, Cambridge, CB4 0EY, UK  
Telephone: +44 (0) 1223 755950 - Fax: +44 (0) 1223 755951 - E-Mail: [info@abbexa.com](mailto:info@abbexa.com)

**Buffer:** PBS with 0.09% (W/V) sodium azide. This antibody is purified through a protein A column, followed by peptide affinity purification.

**Note:** This product is for research use only.