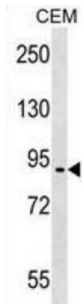


Abbexa Ltd, Innovation Centre, Cambridge Science Park, Cambridge, CB4 0EY, UK
Telephone: +44 (0) 1223 755950 - Fax: +44 (0) 1223 755951 - E-Mail: info@abbexa.com

EPB41L4A Antibody

Catalogue No.: abx029396



Members of the band 4.1 protein superfamily, including EPB41L4A, are thought to regulate the interaction between the cytoskeleton and plasma membrane (Ishiguro et al., 2000 [PubMed 10874211]).

Target: EPB41L4A

Reactivity: Human

Host: Rabbit

Clonality: Polyclonal

Tested Applications: WB

Recommended dilutions: Optimal dilutions/concentrations should be determined by the end user.

Immunogen: Human EPB41L4A.

Purification: Peptide Affinity Purified Rabbit Polyclonal Antibody.

Isotype: IgG

Conjugation: Unconjugated

Specificity: This EPB41L4A antibody is generated from rabbits immunized with a KLH conjugated synthetic peptide between 562-590 amino acids from the C-terminal region of human EPB41L4A.

Storage: Aliquot and store at -20 °C. Avoid repeated freeze/thaw cycles.

Swiss Prot: [Q9HCS5](#)

Gene Symbol: EPB41L4A

Abbexa Ltd, Innovation Centre, Cambridge Science Park, Cambridge, CB4 0EY, UK
Telephone: +44 (0) 1223 755950 - Fax: +44 (0) 1223 755951 - E-Mail: info@abbexa.com

Buffer: PBS with 0.09% (W/V) sodium azide. This antibody is purified through a protein A column, followed by peptide affinity purification.

Note: This product is for research use only.