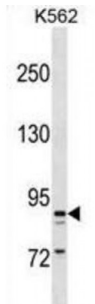


Taste 1 Receptor Member 3 (TAS1R3) Antibody

Catalogue No.: abx028771



The TAS1R3 gene encodes the human homolog of mouse Sac, a major determinant of differences between sweet-sensitive and insensitive mouse strains in their responsiveness to sucrose, saccharine, and other sweeteners (Max et al., 2001 [PubMed 11326277]).

Target: TAS1R3

Reactivity: Human

Host: Rabbit

Clonality: Polyclonal

Tested Applications: WB

Recommended dilutions: Optimal dilutions/concentrations should be determined by the end user.

Immunogen: Human TAS1R3.

Purification: Peptide Affinity Purified Rabbit Polyclonal Antibody.

Isotype: IgG

Conjugation: Unconjugated

Specificity: This TAS1R3 antibody is generated from rabbits immunized with a KLH conjugated synthetic peptide between 229-258 amino acids from the N-terminal region of human TAS1R3.

Storage: Aliquot and store at -20 °C. Avoid repeated freeze/thaw cycles.

Swiss Prot: [Q7RTX0](#)

Gene Symbol: TAS1R3

Abbexa Ltd, Innovation Centre, Cambridge Science Park, Cambridge, CB4 0EY, UK
Telephone: +44 (0) 1223 755950 - Fax: +44 (0) 1223 755951 - E-Mail: info@abbexa.com

Buffer: PBS with 0.09% (W/V) sodium azide. This antibody is purified through a protein A column, followed by peptide affinity purification.

Note: This product is for research use only.