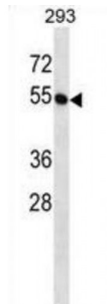


Butyrophilin Subfamily 2 Member A1 (BTN2A1) Antibody

Catalogue No.: abx028717



BTN2A1 is a member of the BTN2 subfamily of genes, which encode proteins belonging to the butyrophilin protein family. The gene is located in a cluster on chromosome 6, consisting of seven genes belonging to the expanding B7/butyrophilin-like group, a subset of the immunoglobulin gene superfamily. The encoded protein is an integral plasma membrane B box protein involved in lipid, fatty-acid and sterol metabolism. Multiple alternatively spliced transcript variants encoding different isoforms have been found for this gene.

Target: BTN2A1

Reactivity: Human

Host: Rabbit

Clonality: Polyclonal

Tested Applications: WB

Recommended dilutions: Optimal dilutions/concentrations should be determined by the end user.

Immunogen: Human BTN2A1.

Purification: Peptide Affinity Purified Rabbit Polyclonal Antibody.

Isotype: IgG

Conjugation: Unconjugated

Specificity: This BTN2A1 antibody is generated from rabbits immunized with a KLH conjugated synthetic peptide between 344-373 amino acids from the C-terminal region of human BTN2A1.

Storage: Aliquot and store at -20 °C. Avoid repeated freeze/thaw cycles.

Swiss Prot: [Q7KYR7](#)

Abbexa Ltd, Innovation Centre, Cambridge Science Park, Cambridge, CB4 0EY, UK
Telephone: +44 (0) 1223 755950 - Fax: +44 (0) 1223 755951 - E-Mail: info@abbexa.com

Gene Symbol: BTN2A1

Buffer: PBS with 0.09% (W/V) sodium azide. This antibody is purified through a protein A column, followed by peptide affinity purification.

Note: This product is for research use only.