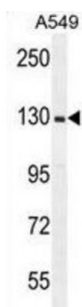
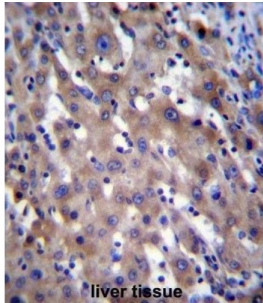


**X-Linked Retinitis Pigmentosa GTPase Regulator (RPGR) Antibody**

Catalogue No.: abx026667



This gene encodes a protein with a series of six RCC1-like domains (RLDs), characteristic of the highly conserved guanine nucleotide exchange factors. The encoded protein is found in the Golgi body and interacts with RPGRIP1. This protein localizes to the outer segment of rod photoreceptors and is essential for their viability. Mutations in this gene have been associated with X-linked retinitis pigmentosa (XLRP). Multiple alternatively spliced transcript variants that encode different isoforms of this gene have been reported, but the full-length nature of only some have been determined.

**Target:** RPGR**Reactivity:** Human**Host:** Rabbit**Clonality:** Polyclonal**Tested Applications:** WB, IHC**Recommended dilutions:** Optimal dilutions/concentrations should be determined by the end user.**Immunogen:** Human RPGR.**Purification:** Peptide Affinity Purified Rabbit Polyclonal Antibody.**Isotype:** IgG

Abbexa Ltd, Innovation Centre, Cambridge Science Park, Cambridge, CB4 0EY, UK  
Telephone: +44 (0) 1223 755950 - Fax: +44 (0) 1223 755951 - E-Mail: info@abbexa.com

**Conjugation:** Unconjugated

**Specificity:** This RPGR antibody is generated from rabbits immunized with a KLH conjugated synthetic peptide between 744-772 amino acids from the C-terminal region of human RPGR.

**Storage:** Aliquot and store at -20 °C. Avoid repeated freeze/thaw cycles.

**Swiss Prot:** [Q92834](#)

**Buffer:** PBS with 0.09% (W/V) sodium azide. This antibody is purified through a protein A column, followed by peptide affinity purification.

**Note:** This product is for research use only.