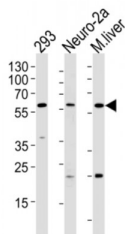
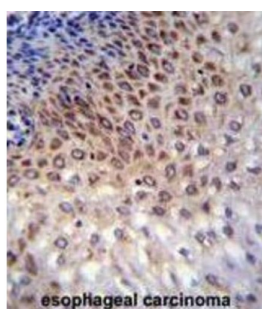
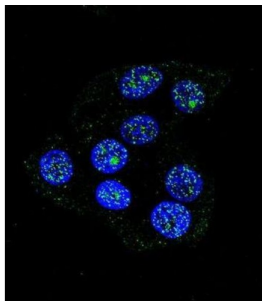


Abbexa Ltd, Innovation Centre, Cambridge Science Park, Cambridge, CB4 0EY, UK
Telephone: +44 (0) 1223 755950 - Fax: +44 (0) 1223 755951 - E-Mail: info@abbexa.com

Coiled-Coil Domain Containing 36 (CCDC36) Antibody

Catalogue No.: abx026419



CCDC36 Antibody is a Rabbit Polyclonal antibody against CCDC36.

Target: CCDC36

Reactivity: Human

Host: Rabbit

Clonality: Polyclonal

Tested Applications: WB, IHC, IF/ICC

Recommended dilutions: Optimal dilutions/concentrations should be determined by the end user.

Immunogen: Human CCDC36.

Abbexa Ltd, Innovation Centre, Cambridge Science Park, Cambridge, CB4 0EY, UK
Telephone: +44 (0) 1223 755950 - Fax: +44 (0) 1223 755951 - E-Mail: info@abbexa.com

Purification:	Peptide Affinity Purified Rabbit Polyclonal Antibody.
Isotype:	IgG
Conjugation:	Unconjugated
Specificity:	This CCDC36 antibody is generated from rabbits immunized with a KLH conjugated synthetic peptide between 422-450 amino acids from the C-terminal region of human CCDC36.
Storage:	Aliquot and store at -20 °C. Avoid repeated freeze/thaw cycles.
Swiss Prot:	Q8IYA8
Gene Symbol:	CCDC36
Buffer:	PBS with 0.09% (W/V) sodium azide. This antibody is purified through a protein A column, followed by peptide affinity purification.
Note:	This product is for research use only.