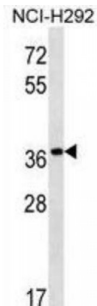


Abbexa Ltd, Innovation Centre, Cambridge Science Park, Cambridge, CB4 0EY, UK  
Telephone: +44 (0) 1223 755950 - Fax: +44 (0) 1223 755951 - E-Mail: info@abbexa.com

## Pepsin A-5 (PGA5) Antibody

Catalogue No.: abx025036



PGA3 shows particularly broad specificity; although bonds involving phenylalanine and leucine are preferred, many others are also cleaved to some extent.

**Target:** PGA5

**Reactivity:** Human

**Host:** Rabbit

**Clonality:** Polyclonal

**Tested Applications:** WB

**Recommended dilutions:** Optimal dilutions/concentrations should be determined by the end user.

**Immunogen:** Human PGA5.

**Purification:** Peptide Affinity Purified Rabbit Polyclonal Antibody.

**Isotype:** IgG

**Conjugation:** Unconjugated

**Specificity:** This PGA5 antibody is generated from rabbits immunized with a KLH conjugated synthetic peptide between 354-383 amino acids from the C-terminal region of human PGA5.

**Storage:** Aliquot and store at -20 °C. Avoid repeated freeze/thaw cycles.

**Swiss Prot:** [P0DJJ9](#)

**Buffer:** PBS with 0.09% (W/V) sodium azide. This antibody is purified through a protein A column, followed by peptide affinity purification.

Abbexa Ltd, Innovation Centre, Cambridge Science Park, Cambridge, CB4 0EY, UK  
Telephone: +44 (0) 1223 755950 - Fax: +44 (0) 1223 755951 - E-Mail: [info@abbexa.com](mailto:info@abbexa.com)

**Note:** This product is for research use only.