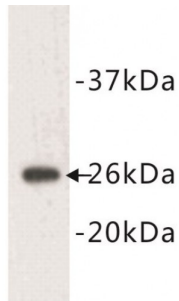


Abbexa Ltd, Innovation Centre, Cambridge Science Park, Cambridge, CB4 0EY, UK  
Telephone: +44 (0) 1223 755950 - Fax: +44 (0) 1223 755951 - E-Mail: info@abbexa.com

## B-Cell Leukemia/Lymphoma 2 (BCL2) Antibody

Catalogue No.: abx019021



BCL2 Antibody is a Rabbit Polyclonal antibody against Human and Mouse.

**Target:** BCL2

**Reactivity:** Human, Mouse

**Host:** Rabbit

**Clonality:** Polyclonal

**Tested Applications:** WB

**Recommended dilutions:** Optimal dilutions/concentrations should be determined by the end user.

**Immunogen:** A synthetic peptide (conjugated with KLH) corresponding to the N-terminal residues of mouse Bcl-2.

**Purification:** Immunogen affinity purified.

**Isotype:** IgG

**Conjugation:** Unconjugated

**Storage:** Aliquot and store at -20 °C. Avoid repeated freeze/thaw cycles.

**Swiss Prot:** [P10415](#)

**GeneID:** [596](#)

**OMIM:** [151430](#)

**Buffer:** TBS, pH 7.4, 0.5% BSA, 40% glycerol and 0.05% sodium azide.

Abbexa Ltd, Innovation Centre, Cambridge Science Park, Cambridge, CB4 0EY, UK  
Telephone: +44 (0) 1223 755950 - Fax: +44 (0) 1223 755951 - E-Mail: [info@abbexa.com](mailto:info@abbexa.com)

**Note:** This product is for research use only.