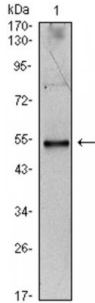


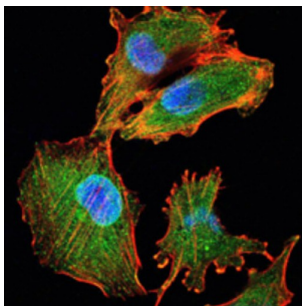
Abbexa Ltd, Innovation Centre, Cambridge Science Park, Cambridge, CB4 0EY, UK
Telephone: +44 (0) 1223 755950 - Fax: +44 (0) 1223 755951 - E-Mail: info@abbexa.com

Interleukin 34 (IL34) Antibody

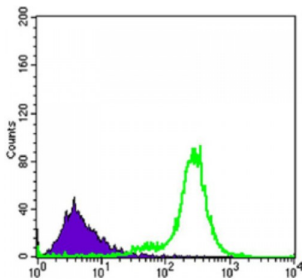
Catalogue No.: abx015892



Western blot analysis using IL34 antibody against IL34-hIgGFc transfected HEK293 cell lysate.



Immunofluorescence analysis of U251 cells using IL34 antibody (green). Blue: DRAQ5 fluorescent DNA dye. Red: Actin filaments have been labeled with Alexa Fluor-555 phalloidin.



Flow cytometric analysis of K562 cells using IL34 antibody (green) and negative control (purple).

Cytokine that promotes the differentiation and viability of monocytes and macrophages. Stimulates phosphorylation of MAPK1/ERK2 AND MAPK3/ERK1. Ligand for colony-stimulating factor-1 receptor CSF1R. Tissue specificity: Detected in the sinusoidal epithelium in the red pulp of spleen (at protein level). Predominantly expressed in spleen. Also detected in a range of other tissues including heart, brain, lung, liver, kidney, thymus, testis, ovary, small intestine, prostate and colon.

Target:	IL34
Reactivity:	Human
Host:	Mouse
Clonality:	Monoclonal
Tested Applications:	ELISA, WB, IF/ICC, FCM

Abbexa Ltd, Innovation Centre, Cambridge Science Park, Cambridge, CB4 0EY, UK
Telephone: +44 (0) 1223 755950 - Fax: +44 (0) 1223 755951 - E-Mail: info@abbexa.com

Recommended dilutions: ELISA: 1/10000, WB: 1/500 - 1/2000, IF/ICC: 1/200 - 1/1000, FCM: 1/200 - 1/400. Optimal dilutions/concentrations should be determined by the end user.

Immunogen: Purified recombinant fragment of human IL34 expressed in E. coli.

Purification: Unpurified Ascites.

Isotype: IgG₁

Conjugation: Unconjugated

Storage: Aliquot and store at -20 °C. Avoid repeated freeze/thaw cycles.

Molecular Weight: 27.5 kDa

Swiss Prot: [Q6ZMJ4](#)

GeneID: [146433](#)

Gene Symbol: IL34

OMIM: [612081](#)

HGNC: 28529

Ensembl: ENSG00000157368

Buffer: Ascitic fluid containing 0.03% sodium azide.

Note: This product is for research use only.