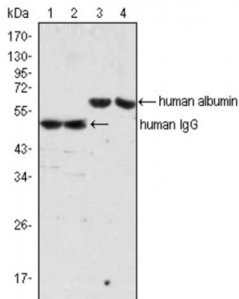


Abbexa Ltd, Innovation Centre, Cambridge Science Park, Cambridge, CB4 0EY, UK  
Telephone: +44 (0) 1223 755950 - Fax: +44 (0) 1223 755951 - E-Mail: info@abbexa.com

## Mouse anti-Human IgG Antibody

Catalogue No.: abx015704



Western blot analysis using IgG antibody (lane 1, 2) and Albumin antibody (lane 3, 4) against human serum (lane 1, 3) and plasma (lane 2, 4).

Monoclonal anti-human IgG is derived from the hybridoma1 produced by the fusion of mouse myeloma cells and splenocytes from an immunized mouse. It is specific for the whole human IgG molecule, has no cross action with human IgM molecule as determined by an ELISA. Reactivity is observed with all human IgG subclasses but not with the Fab fragment of human IgG, the antibody site is located in the terminal end of human IgG (part of the Fab fragment), the Fc portion has various important functions such as complement fixation, site for rheumatoid factor.

**Target:** human IgG

**Reactivity:** Human

**Host:** Mouse

**Clonality:** Monoclonal

**Tested Applications:** ELISA, WB

**Recommended dilutions:** ELISA: 1/10000, WB: 1/500 - 1/2000. Optimal dilutions/concentrations should be determined by the end user.

**Immunogen:** Human IgG was isolated from human sera and purified by chromatography.

**Purification:** Purified antibody

**Isotype:** IgG<sub>1</sub>

**Conjugation:** Unconjugated

**Storage:** Aliquot and store at -20 °C. Avoid repeated freeze/thaw cycles.

**Molecular Weight:** 50 kDa

**Concentration:** 1.0 mg/ml

Abbexa Ltd, Innovation Centre, Cambridge Science Park, Cambridge, CB4 0EY, UK  
Telephone: +44 (0) 1223 755950 - Fax: +44 (0) 1223 755951 - E-Mail: [info@abbexa.com](mailto:info@abbexa.com)

**Buffer:** PBS containing 0.03% sodium azide.

**Note:** This product is for research use only.