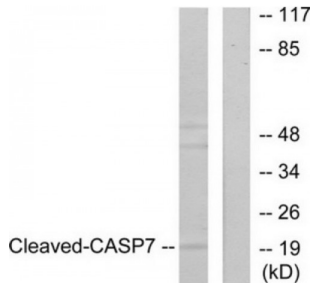


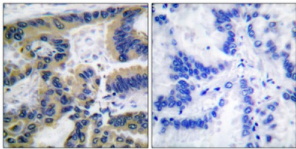
Abbexa Ltd, Innovation Centre, Cambridge Science Park, Cambridge, CB4 0EY, UK
Telephone: +44 (0) 1223 755950 - Fax: +44 (0) 1223 755951 - E-Mail: info@abbexa.com

Caspase 7 (Cleaved-Asp198) Antibody

Catalogue No.: abx015537



Western blot analysis of extracts from 293 cells, treated with Etoposide (25uM, 60mins), using Caspase 7 (cleaved-Asp198) antibody.



Immunohistochemical analysis of paraffin-embedded human lung carcinoma tissue, using Caspase 7 (cleaved-Asp198) antibody.

Rabbit polyclonal antibody against Caspase 7 protein. Immunogen region is Internal. Specificity is as follows for the reactive species: H:D198, M:D198.

Target: Caspase 7

Reactivity: Human, Mouse

Host: Rabbit

Clonality: Polyclonal

Tested Applications: ELISA, WB, IHC

Recommended dilutions: Optimal dilutions/concentrations should be determined by the end user.

Immunogen: The antiserum was produced against synthesized peptide derived from Internal of human Caspase 7 (Cleaved-Asp198).

Purification: Purified from rabbit antiserum by affinity chromatography using epitope-specific immunogen.

Form: Liquid

Isotype: IgG

Abbexa Ltd, Innovation Centre, Cambridge Science Park, Cambridge, CB4 0EY, UK
Telephone: +44 (0) 1223 755950 - Fax: +44 (0) 1223 755951 - E-Mail: info@abbexa.com

Conjugation: Unconjugated

Storage: Aliquot and store at -20 °C. Avoid repeated freeze/thaw cycles.

Swiss Prot: [P55210](#)

Buffer: PBS (without Mg²⁺ and Ca²⁺), pH 7.4, 150 mM NaCl, 0.02% sodium azide, 50% glycerol.

Note: This product is for research use only.