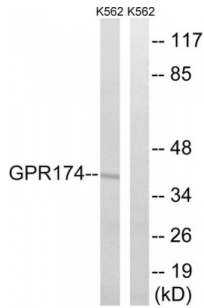
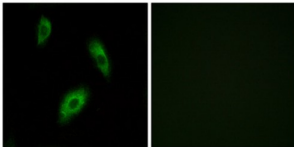


Probable G-Protein Coupled Receptor 174 (GPR174) Antibody

Catalogue No.: abx015314



Western blot analysis of extracts from K562 cells, using GPR174 antibody.



Immunofluorescence analysis of LOVO cells, using GPR174 antibody.

Rabbit polyclonal antibody against GPR174 protein. Immunogen region is Internal.

Target:	GPR174
Reactivity:	Human
Host:	Rabbit
Clonality:	Polyclonal
Tested Applications:	ELISA, WB, IF/ICC
Recommended dilutions:	WB: 1/500 - 1/3000, IF/ICC: 1/100 - 1/500, ELISA: 1/40000. Optimal dilutions/concentrations should be determined by the end user.
Immunogen:	The antiserum was produced against synthesized peptide derived from internal of human GPR174.
Purification:	Purified from rabbit antiserum by affinity chromatography using epitope-specific immunogen.
Form:	Liquid
Isotype:	IgG
Conjugation:	Unconjugated

Abbexa Ltd, Innovation Centre, Cambridge Science Park, Cambridge, CB4 0EY, UK
Telephone: +44 (0) 1223 755950 - Fax: +44 (0) 1223 755951 - E-Mail: info@abbexa.com

Storage: Aliquot and store at -20 °C. Avoid repeated freeze/thaw cycles.

Swiss Prot: [Q9BXC1](#)

Buffer: PBS (without Mg²⁺ and Ca²⁺), pH 7.4, 150 mM NaCl, 0.02% sodium azide, 50% glycerol.

Note: This product is for research use only.