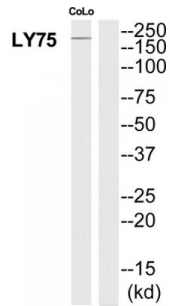


Lymphocyte Antigen 75 (LY75) Antibody

Catalogue No.: abx015188



Rabbit polyclonal antibody against LY75 protein. Immunogen region is Internal.

Target: LY75

Reactivity: Human

Host: Rabbit

Clonality: Polyclonal

Tested Applications: ELISA, WB

Recommended dilutions: Optimal dilutions/concentrations should be determined by the end user.

Immunogen: The antiserum was produced against synthesized peptide derived from Internal of human LY75.

Purification: Purified from rabbit antiserum by affinity chromatography using epitope-specific immunogen.

Form: Liquid

Isotype: IgG

Conjugation: Unconjugated

Storage: Aliquot and store at -20 °C. Avoid repeated freeze/thaw cycles.

Swiss Prot: [O60449](#)

Buffer: PBS (without Mg²⁺ and Ca²⁺), pH 7.4, 150 mM NaCl, 0.02% sodium azide, 50% glycerol.

Note: This product is for research use only.