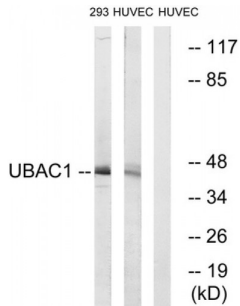


Ubiquitin-Associated Domain-Containing Protein 1 (UBAC1) Antibody

Catalogue No.: abx014986



Western blot analysis of extracts from 293 cells and HUVEC cells, using UBAC1 antibody.

Rabbit polyclonal antibody against UBAC1 protein. Immunogen region is Internal.

Target: UBAC1**Reactivity:** Human**Host:** Rabbit**Clonality:** Polyclonal**Tested Applications:** ELISA, WB**Recommended dilutions:** WB: 1/500 - 1/3000, ELISA: 1/10000. Optimal dilutions/concentrations should be determined by the end user.**Immunogen:** The antiserum was produced against synthesized peptide derived from internal of human UBAC1.**Purification:** Purified from rabbit antiserum by affinity chromatography using epitope-specific immunogen.**Form:** Liquid**Isotype:** IgG**Conjugation:** Unconjugated**Storage:** Aliquot and store at -20 °C. Avoid repeated freeze/thaw cycles.**Swiss Prot:** [Q9BSL1](#)**Buffer:** PBS (without Mg²⁺ and Ca²⁺), pH 7.4, 150 mM NaCl, 0.02% sodium azide, 50% glycerol.**Note:** This product is for research use only.