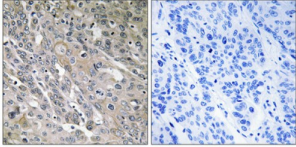


Rho Guanine Nucleotide Exchange Factor 9 (ARHGEF9) Antibody

Catalogue No.: abx014827



Immunohistochemistry analysis of paraffin-embedded human lung carcinoma tissue using ARHGEF9 antibody.

Rabbit polyclonal antibody against ARHGEF9 protein. Immunogen region is C-terminal.

Target:	ARHGEF9
Reactivity:	Human, Mouse, Rat
Host:	Rabbit
Clonality:	Polyclonal
Tested Applications:	ELISA, IHC
Recommended dilutions:	IHC: 1/50 - 1/100, ELISA: 1/40000. Optimal dilutions/concentrations should be determined by the end user.
Immunogen:	The antiserum was produced against synthesized peptide derived from C-terminal of human ARHGEF9.
Purification:	Purified from rabbit antiserum by affinity chromatography using epitope-specific immunogen.
Form:	Liquid
Isotype:	IgG
Conjugation:	Unconjugated
Storage:	Aliquot and store at -20 °C. Avoid repeated freeze/thaw cycles.
Swiss Prot:	O43307
Buffer:	PBS (without Mg ²⁺ and Ca ²⁺), pH 7.4, 150 mM NaCl, 0.02% sodium azide, 50% glycerol.
Note:	This product is for research use only.