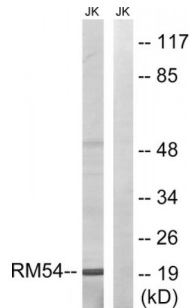
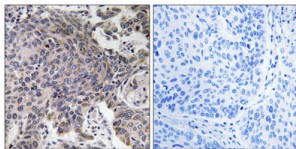


## Mitochondrial Ribosomal Protein L54 (MRPL54) Antibody

Catalogue No.: abx014076



Western blot analysis of extracts from Jurkat cells, using MRPL54 antibody.



Immunohistochemistry analysis of paraffin-embedded human lung carcinoma tissue using MRPL54 antibody.

Rabbit polyclonal antibody against MRPL54 protein. Immunogen region is Internal.

<b>Target:</b>	MRPL54
<b>Reactivity:</b>	Human, Mouse
<b>Host:</b>	Rabbit
<b>Clonality:</b>	Polyclonal
<b>Tested Applications:</b>	ELISA, WB, IHC
<b>Recommended dilutions:</b>	WB: 1/500 - 1/3000, IHC: 1/50 - 1/100, ELISA: 1/40000. Optimal dilutions/concentrations should be determined by the end user.
<b>Immunogen:</b>	The antiserum was produced against synthesized peptide derived from internal of human MRPL54.
<b>Purification:</b>	Purified from rabbit antiserum by affinity chromatography using epitope-specific immunogen.
<b>Form:</b>	Liquid
<b>Isotype:</b>	IgG
<b>Conjugation:</b>	Unconjugated

Abbexa Ltd, Innovation Centre, Cambridge Science Park, Cambridge, CB4 0EY, UK  
Telephone: +44 (0) 1223 755950 - Fax: +44 (0) 1223 755951 - E-Mail: [info@abbexa.com](mailto:info@abbexa.com)

**Storage:** Aliquot and store at -20 °C. Avoid repeated freeze/thaw cycles.

**Swiss Prot:** [Q6P161](#)

**Buffer:** PBS (without Mg<sup>2+</sup> and Ca<sup>2+</sup>), pH 7.4, 150 mM NaCl, 0.02% sodium azide, 50% glycerol.

**Note:** This product is for research use only.