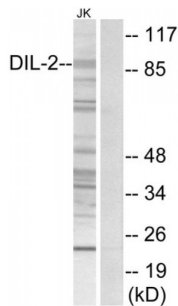
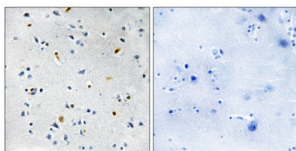


Differentially Expressed In Cancerous And Non-Cancerous Lung Cells 2 (DIL-2) Antibody

Catalogue No.: abx013850



Western blot analysis of extracts from Jurkat cells, using DIL-2 antibody.



Immunohistochemistry analysis of paraffin-embedded human brain tissue using DIL-2 antibody.

Rabbit polyclonal antibody against DIL-2 protein. Immunogen region is Internal.

Target: DIL-2

Reactivity: Human, Mouse

Host: Rabbit

Clonality: Polyclonal

Tested Applications: ELISA, WB, IHC

Recommended dilutions: WB: 1/500 - 1/3000, IHC: 1/50 - 1/100, ELISA: 1/1000. Optimal dilutions/concentrations should be determined by the end user.

Immunogen: The antiserum was produced against synthesized peptide derived from internal of human DIL-2.

Purification: Purified from rabbit antiserum by affinity chromatography using epitope-specific immunogen.

Form: Liquid

Isotype: IgG

Abbexa Ltd, Innovation Centre, Cambridge Science Park, Cambridge, CB4 0EY, UK
Telephone: +44 (0) 1223 755950 - Fax: +44 (0) 1223 755951 - E-Mail: info@abbexa.com

Conjugation: Unconjugated

Storage: Aliquot and store at -20 °C. Avoid repeated freeze/thaw cycles.

Swiss Prot: [Q9ULW0](#)

Buffer: PBS (without Mg²⁺ and Ca²⁺), pH 7.4, 150 mM NaCl, 0.02% sodium azide, 50% glycerol.

Note: This product is for research use only.