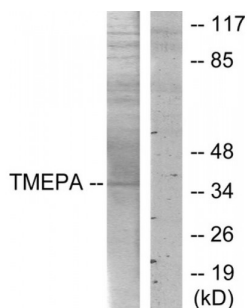


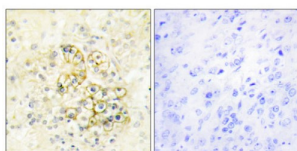
Abbexa Ltd, Innovation Centre, Cambridge Science Park, Cambridge, CB4 0EY, UK
 Telephone: +44 (0) 1223 755950 - Fax: +44 (0) 1223 755951 - E-Mail: info@abbexa.com

Prostate Transmembrane Protein Androgen Induced 1 (PMEPA1) Antibody

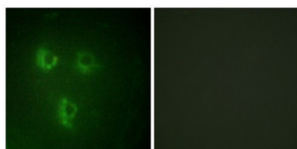
Catalogue No.: abx013748



Western blot analysis of extracts from HT-29 cells, using TMEPA antibody.



Immunohistochemistry analysis of paraffin-embedded human prostate tissue using TMEPA antibody.



Immunofluorescence analysis of HUVEC cells, using TMEPA antibody.

Rabbit polyclonal antibody against PMEPA1 protein. Immunogen region is Internal.

Target: PMEPA1

Reactivity: Human

Host: Rabbit

Clonality: Polyclonal

Tested Applications: ELISA, WB, IHC, IF/ICC

Recommended dilutions: WB: 1/500 - 1/3000, IHC: 1/50 - 1/100, IF/ICC: 1/100 - 1/500, ELISA: 1/20000. Optimal dilutions/concentrations should be determined by the end user.

Abbexa Ltd, Innovation Centre, Cambridge Science Park, Cambridge, CB4 0EY, UK
Telephone: +44 (0) 1223 755950 - Fax: +44 (0) 1223 755951 - E-Mail: info@abbexa.com

Immunogen:	The antiserum was produced against synthesized peptide derived from internal of human TMEPA.
Purification:	Purified from rabbit antiserum by affinity chromatography using epitope-specific immunogen.
Form:	Liquid
Isotype:	IgG
Conjugation:	Unconjugated
Storage:	Aliquot and store at -20 °C. Avoid repeated freeze/thaw cycles.
Swiss Prot:	<u>Q969W9</u>
Buffer:	PBS (without Mg ²⁺ and Ca ²⁺), pH 7.4, 150 mM NaCl, 0.02% sodium azide, 50% glycerol.
Note:	This product is for research use only.