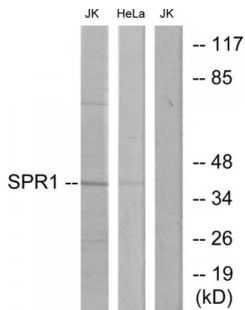


Spingosylphosphorylcholine Receptor (SPR1) Antibody

Catalogue No.: abx013631



Western blot analysis of extracts from Jurkat cells and HeLa cells, using SPR1 antibody.

Rabbit polyclonal antibody against SPR1 protein. Immunogen region is C-terminal.

Target:	SPR1
Reactivity:	Human, Mouse
Host:	Rabbit
Clonality:	Polyclonal
Tested Applications:	ELISA, WB
Recommended dilutions:	WB: 1/500 - 1/3000, ELISA: 1/5000. Optimal dilutions/concentrations should be determined by the end user.
Immunogen:	The antiserum was produced against synthesized peptide derived from C-terminal of human SPR1.
Purification:	Purified from rabbit antiserum by affinity chromatography using epitope-specific immunogen.
Form:	Liquid
Isotype:	IgG
Conjugation:	Unconjugated
Storage:	Aliquot and store at -20 °C. Avoid repeated freeze/thaw cycles.
Swiss Prot:	Q15743
Buffer:	PBS (without Mg ²⁺ and Ca ²⁺), pH 7.4, 150 mM NaCl, 0.02% sodium azide, 50% glycerol.
Note:	This product is for research use only.