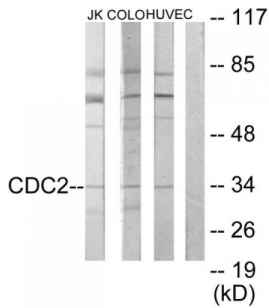


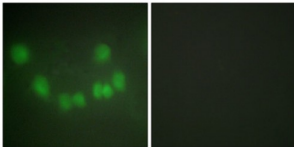
Abbexa Ltd, Innovation Centre, Cambridge Science Park, Cambridge, CB4 0EY, UK  
 Telephone: +44 (0) 1223 755950 - Fax: +44 (0) 1223 755951 - E-Mail: info@abbexa.com

## Cell Division Control Protein 2 Homolog (CDC2) Antibody

Catalogue No.: abx013362



Western blot analysis of extracts from Jurkat cells, COLO205 cells and HUVEC cells, using CDC2 antibody.



Immunofluorescence analysis of HUVEC cells, using CDC2 antibody.

Rabbit polyclonal antibody against CDC2 protein. Immunogen region is Internal.

<b>Target:</b>	CDC2
<b>Reactivity:</b>	Human, Mouse, Rat
<b>Host:</b>	Rabbit
<b>Clonality:</b>	Polyclonal
<b>Tested Applications:</b>	ELISA, WB, IF/ICC
<b>Recommended dilutions:</b>	WB: 1/500 - 1/3000, IF/ICC: 1/100 - 1/500, ELISA: 1/5000. Optimal dilutions/concentrations should be determined by the end user.
<b>Immunogen:</b>	The antiserum was produced against synthesized peptide derived from internal of human CDC2.
<b>Purification:</b>	Purified from rabbit antiserum by affinity chromatography using epitope-specific immunogen.
<b>Form:</b>	Liquid
<b>Isotype:</b>	IgG
<b>Conjugation:</b>	Unconjugated

Abbexa Ltd, Innovation Centre, Cambridge Science Park, Cambridge, CB4 0EY, UK  
Telephone: +44 (0) 1223 755950 - Fax: +44 (0) 1223 755951 - E-Mail: [info@abbexa.com](mailto:info@abbexa.com)

**Storage:** Aliquot and store at -20 °C. Avoid repeated freeze/thaw cycles.

**Swiss Prot:** [P06493](#)

**Enzyme Commission Number:** EC 2.7.11.22:::EC 2.7.11.23

**Buffer:** PBS (without Mg<sup>2+</sup> and Ca<sup>2+</sup>), pH 7.4, 150 mM NaCl, 0.02% sodium azide, 50% glycerol.

**Note:** This product is for research use only.