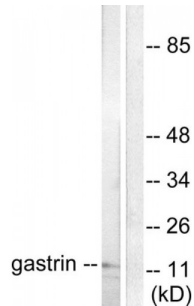


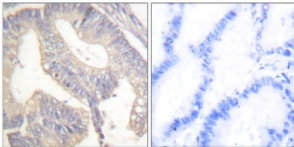
Abbexa Ltd, Innovation Centre, Cambridge Science Park, Cambridge, CB4 0EY, UK
Telephone: +44 (0) 1223 755950 - Fax: +44 (0) 1223 755951 - E-Mail: info@abbexa.com

Gastrin (GAST) Antibody

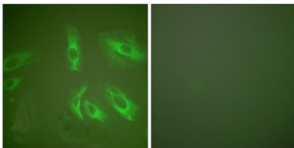
Catalogue No.: abx013089



Western blot analysis of extracts from NIH/3T3 cells, using Gastrin antibody (abx013089).



Immunohistochemical analysis of paraffin-embedded human colon carcinoma tissue using Gastrin antibody (abx013089).



Immunofluorescence analysis of HeLa cells, using Gastrin antibody (abx013089).

Rabbit polyclonal antibody against Gastrin protein. Immunogen region is Internal.

Target: Gastrin

Reactivity: Human, Mouse, Rat

Host: Rabbit

Clonality: Polyclonal

Tested Applications: ELISA, WB, IHC, IF/ICC

Recommended dilutions: WB: 1/500 - 1/3000, IHC: 1/50 - 1/100, IF/ICC: 1/100 - 1/500, ELISA: 1/10000. Optimal dilutions/concentrations should be determined by the end user.

Immunogen: The antiserum was produced against synthesized peptide derived from internal of human Gastrin.

Abbexa Ltd, Innovation Centre, Cambridge Science Park, Cambridge, CB4 0EY, UK
Telephone: +44 (0) 1223 755950 - Fax: +44 (0) 1223 755951 - E-Mail: info@abbexa.com

Purification: Purified from rabbit antiserum by affinity chromatography using epitope-specific immunogen.

Form: Liquid

Isotype: IgG

Conjugation: Unconjugated

Storage: Aliquot and store at -20 °C. Avoid repeated freeze/thaw cycles.

Swiss Prot: [P01350](#)

Buffer: PBS (without Mg²⁺ and Ca²⁺), pH 7.4, 150 mM NaCl, 0.02% sodium azide, 50% glycerol.

Note: This product is for research use only.