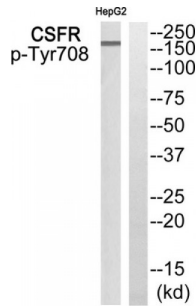


Macrophage Colony-Stimulating Factor 1 Receptor (CSF1R) Antibody

Catalogue No.: abx012734



Rabbit polyclonal antibody against CSFR protein. Immunogen region is C-terminal. Specificity is as follows for the reactive species: H:Y708, M:Y706, R:Y706.

Target: CSFR

Reactivity: Human, Mouse, Rat

Host: Rabbit

Clonality: Polyclonal

Tested Applications: ELISA, WB

Recommended dilutions: Optimal dilutions/concentrations should be determined by the end user.

Immunogen: The antiserum was produced against synthesized phosphopeptide derived from human CSFR around the phosphorylation site of tyrosine 708.

Purification: Purified from rabbit antiserum by affinity chromatography using epitope-specific immunogen.

Form: Liquid

Isotype: IgG

Conjugation: Unconjugated

Storage: Aliquot and store at -20 °C. Avoid repeated freeze/thaw cycles.

Swiss Prot: [P07333](#)

Buffer: PBS (without Mg²⁺ and Ca²⁺), pH 7.4, 150 mM NaCl, 0.02% sodium azide, 50% glycerol.

Note: This product is for research use only.