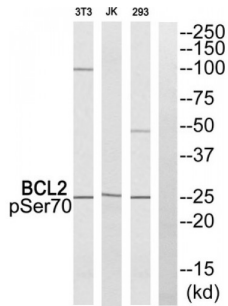


Abbexa Ltd, Innovation Centre, Cambridge Science Park, Cambridge, CB4 0EY, UK
 Telephone: +44 (0) 1223 755950 - Fax: +44 (0) 1223 755951 - E-Mail: info@abbexa.com

BCL2 (Phospho-Ser70) Antibody

Catalogue No.: abx012720



Western blot analysis of extracts from 293 cells. Jurkat cells and NIH/3T3 cells all treated with Paclitaxel, using BCL2 (Phospho-Ser70) antibody.

Rabbit polyclonal antibody against BCL2 protein. Immunogen region is Internal. Specificity is as follows for the reactive species: M:S70, R:S70.

- Target:** BCL2
- Reactivity:** Mouse, Rat
- Host:** Rabbit
- Clonality:** Polyclonal
- Tested Applications:** ELISA, WB
- Recommended dilutions:** WB: 1/500 - 1/3000, ELISA: 1/40000. Optimal dilutions/concentrations should be determined by the end user.
- Immunogen:** The antiserum was produced against synthesized phosphopeptide derived from human BCL2 around the phosphorylation site of serine 70 (R-T-SP-P-L).
- Purification:** Purified from rabbit antiserum by affinity chromatography using epitope-specific immunogen.
- Form:** Liquid
- Isotype:** IgG
- Conjugation:** Unconjugated
- Storage:** Aliquot and store at -20 °C. Avoid repeated freeze/thaw cycles.
- Swiss Prot:** [P10415](#)
- Buffer:** PBS (without Mg²⁺ and Ca²⁺), pH 7.4, 150 mM NaCl, 0.02% sodium azide, 50% glycerol.

Abbexa Ltd, Innovation Centre, Cambridge Science Park, Cambridge, CB4 0EY, UK
Telephone: +44 (0) 1223 755950 - Fax: +44 (0) 1223 755951 - E-Mail: info@abbexa.com

Note: This product is for research use only.