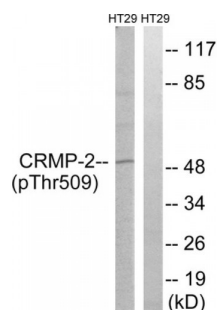


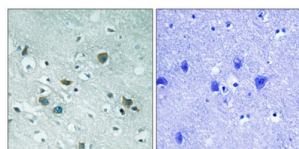
Abbexa Ltd, Innovation Centre, Cambridge Science Park, Cambridge, CB4 0EY, UK  
 Telephone: +44 (0) 1223 755950 - Fax: +44 (0) 1223 755951 - E-Mail: info@abbexa.com

## CRMP2 (Phospho-Thr509) Antibody

Catalogue No.: abx012682



Western blot analysis of extracts from HT-29 cells, treated with heat shock, using CRMP2 (Phospho-Thr509) antibody.



Immunohistochemistry analysis of paraffin-embedded human brain tissue using CRMP2 (Phospho-Thr509) antibody.

Rabbit polyclonal antibody against CRMP2 protein. Immunogen region is C-terminal. Specificity is as follows for the reactive species: H:T509, M:T509, R:T509.

**Target:** CRMP2

**Reactivity:** Human, Mouse, Rat

**Host:** Rabbit

**Clonality:** Polyclonal

**Tested Applications:** ELISA, WB, IHC

**Recommended dilutions:** WB: 1/500 - 1/3000, IHC: 1/50 - 1/100, ELISA: 1/1000. Optimal dilutions/concentrations should be determined by the end user.

**Immunogen:** The antiserum was produced against synthesized phosphopeptide derived from human CRMP2 around the phosphorylation site of threonine 509 (S-V-TP-PK).

**Purification:** Purified from rabbit antiserum by affinity chromatography using epitope-specific immunogen.

**Form:** Liquid

**Isotype:** IgG

Abbexa Ltd, Innovation Centre, Cambridge Science Park, Cambridge, CB4 0EY, UK  
Telephone: +44 (0) 1223 755950 - Fax: +44 (0) 1223 755951 - E-Mail: info@abbexa.com

**Conjugation:** Unconjugated

**Storage:** Aliquot and store at -20 °C. Avoid repeated freeze/thaw cycles.

**Swiss Prot:** [Q16555](#)

**Buffer:** PBS (without Mg<sup>2+</sup> and Ca<sup>2+</sup>), pH 7.4, 150 mM NaCl, 0.02% sodium azide, 50% glycerol.

**Note:** This product is for research use only.