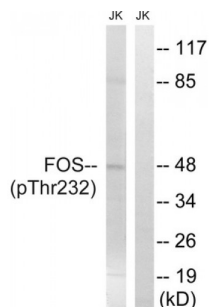


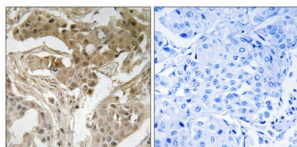
Abbexa Ltd, Innovation Centre, Cambridge Science Park, Cambridge, CB4 0EY, UK
 Telephone: +44 (0) 1223 755950 - Fax: +44 (0) 1223 755951 - E-Mail: info@abbexa.com

Proto-Oncogene C-Fos (pT232) (FOS) Antibody

Catalogue No.: abx012643



Western blot analysis of extracts from Jurkat cells, treated with EGF (200ng/ml, 5mins), using FOS (Phospho-Thr232) antibody.



Immunohistochemistry analysis of paraffin-embedded human breast carcinoma tissue using FOS (Phospho-Thr232) antibody.

Rabbit polyclonal antibody against FOS protein. Immunogen region is Internal. Specificity is as follows for the reactive species: H:T232, M:T232, R:T232.

Target: Proto-Oncogene C-Fos (FOS)

Reactivity: Human, Mouse, Rat

Host: Rabbit

Clonality: Polyclonal

Tested Applications: ELISA, WB, IHC

Recommended dilutions: WB: 1/500 - 1/3000, IHC: 1/50 - 1/100, ELISA: 1/20000. Optimal dilutions/concentrations should be determined by the end user.

Immunogen: The antiserum was produced against synthesized phosphopeptide derived from human FOS around the phosphorylation site of threonine 232 (V-A-TP-P-E).

Purification: Purified from rabbit antiserum by affinity chromatography using epitope-specific immunogen.

Form: Liquid

Isotype: IgG

Abbexa Ltd, Innovation Centre, Cambridge Science Park, Cambridge, CB4 0EY, UK
Telephone: +44 (0) 1223 755950 - Fax: +44 (0) 1223 755951 - E-Mail: info@abbexa.com

Conjugation: Unconjugated

Storage: Aliquot and store at -20 °C. Avoid repeated freeze/thaw cycles.

Swiss Prot: [P01100](#)

Buffer: PBS (without Mg²⁺ and Ca²⁺), pH 7.4, 150 mM NaCl, 0.02% sodium azide, 50% glycerol.

Note: This product is for research use only.