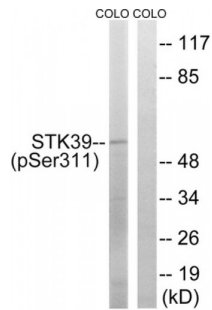


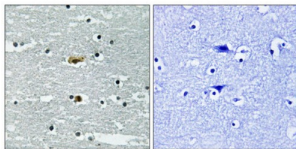
Abbexa Ltd, Innovation Centre, Cambridge Science Park, Cambridge, CB4 0EY, UK
Telephone: +44 (0) 1223 755950 - Fax: +44 (0) 1223 755951 - E-Mail: info@abbexa.com

STK39 (Phospho-Ser311) Antibody

Catalogue No.: abx012629



Western blot analysis of extracts from COLO cells, using STK39 (Phospho-Ser311) antibody.



Immunohistochemistry analysis of paraffin-embedded human brain tissue using STK39 (Phospho-Ser311) antibody.

Rabbit polyclonal antibody against STK39 protein. Immunogen region is Internal. Specificity is as follows for the reactive species: H:S311, M:S321, R:S318.

Target:	STK39
Reactivity:	Human, Mouse, Rat
Host:	Rabbit
Clonality:	Polyclonal
Tested Applications:	ELISA, WB, IHC
Recommended dilutions:	WB: 1/500 - 1/3000, IHC: 1/50 - 1/100. Optimal dilutions/concentrations should be determined by the end user.
Immunogen:	The antiserum was produced against synthesized phosphopeptide derived from human STK39 around the phosphorylation site of serine 311 (G-K-SP-F-R).
Purification:	Purified from rabbit antiserum by affinity chromatography using epitope-specific immunogen.
Form:	Liquid
Isotype:	IgG

Abbexa Ltd, Innovation Centre, Cambridge Science Park, Cambridge, CB4 0EY, UK
Telephone: +44 (0) 1223 755950 - Fax: +44 (0) 1223 755951 - E-Mail: info@abbexa.com

Conjugation: Unconjugated

Storage: Aliquot and store at -20 °C. Avoid repeated freeze/thaw cycles.

Swiss Prot: [Q9UEW8](#)

Enzyme Commission Number: EC 2.7.11.1

Buffer: PBS (without Mg²⁺ and Ca²⁺), pH 7.4, 150 mM NaCl, 0.02% sodium azide, 50% glycerol.

Note: This product is for research use only.