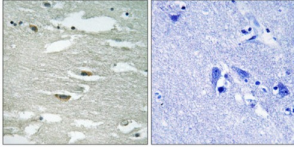


Abbexa Ltd, Innovation Centre, Cambridge Science Park, Cambridge, CB4 0EY, UK
Telephone: +44 (0) 1223 755950 - Fax: +44 (0) 1223 755951 - E-Mail: info@abbexa.com

Integrin Linked Kinase (ILK) Antibody

Catalogue No.: abx012602



Immunohistochemistry analysis of paraffin-embedded human brain tissue using ILK (Phospho-Ser246) antibody.

Rabbit polyclonal antibody against ILK protein. Immunogen region is Internal. Specificity is as follows for the reactive species:
H:S246, M:S246, R:S246.

| | |
|----------------------------------|--|
| Target: | ILK |
| Reactivity: | Human, Mouse, Rat |
| Host: | Rabbit |
| Clonality: | Polyclonal |
| Tested Applications: | ELISA, IHC |
| Recommended dilutions: | IHC: 1/50 - 1/100, ELISA: 1/1000. Optimal dilutions/concentrations should be determined by the end user. |
| Immunogen: | The antiserum was produced against synthesized phosphopeptide derived from human ILK around the phosphorylation site of serine 246 (I-F-SP-H-P). |
| Purification: | Purified from rabbit antiserum by affinity chromatography using epitope-specific immunogen. |
| Form: | Liquid |
| Isotype: | IgG |
| Conjugation: | Unconjugated |
| Storage: | Aliquot and store at -20 °C. Avoid repeated freeze/thaw cycles. |
| Swiss Prot: | Q13418 |
| Enzyme Commission Number: | EC 2.7.11.1 |

Abbexa Ltd, Innovation Centre, Cambridge Science Park, Cambridge, CB4 0EY, UK
Telephone: +44 (0) 1223 755950 - Fax: +44 (0) 1223 755951 - E-Mail: info@abbexa.com

Buffer: PBS (without Mg^{2+} and Ca^{2+}), pH 7.4, 150 mM NaCl, 0.02% sodium azide, 50% glycerol.

Note: This product is for research use only.