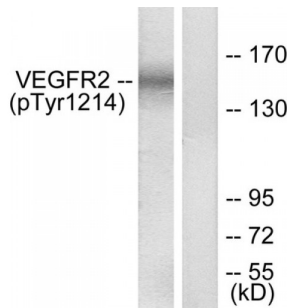


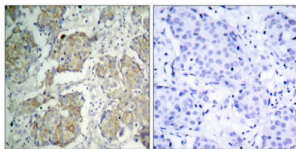
Abbexa Ltd, Innovation Centre, Cambridge Science Park, Cambridge, CB4 0EY, UK
 Telephone: +44 (0) 1223 755950 - Fax: +44 (0) 1223 755951 - E-Mail: info@abbexa.com

VEGFR2 (Phospho-Tyr1214) Antibody

Catalogue No.: abx012572



Western blot analysis of extracts from HepG2 cells, treated with Na3VO4 (0.3nM, 40mins), using VEGFR2 (Phospho-Tyr1214) antibody.



Immunohistochemical analysis of paraffin-embedded human breast carcinoma tissue, using VEGFR2 (Phospho-Tyr1214) Antibody.

Rabbit polyclonal antibody against VEGFR2 protein. Immunogen region is C-terminal. Specificity is as follows for the reactive species: H:Y1214, M:Y1212, R:Y1210.

Target:	VEGFR2
Reactivity:	Human, Mouse, Rat
Host:	Rabbit
Clonality:	Polyclonal
Tested Applications:	ELISA, WB, IHC
Recommended dilutions:	WB: 1/500 - 1/3000, IHC: 1/50 - 1/100, ELISA: 1/10000. Optimal dilutions/concentrations should be determined by the end user.
Immunogen:	The antiserum was produced against synthesized phosphopeptide derived from human VEGFR2 around the phosphorylation site of tyrosine 1214 (F-H-YP-D-N).
Purification:	Purified from rabbit antiserum by affinity chromatography using epitope-specific immunogen.
Form:	Liquid
Isotype:	IgG

Abbexa Ltd, Innovation Centre, Cambridge Science Park, Cambridge, CB4 0EY, UK
Telephone: +44 (0) 1223 755950 - Fax: +44 (0) 1223 755951 - E-Mail: info@abbexa.com

Conjugation: Unconjugated

Storage: Aliquot and store at -20 °C. Avoid repeated freeze/thaw cycles.

Swiss Prot: [P35968](#)

Enzyme Commission Number: EC 2.7.10.1:::EC 2.7.10:::EC 2.7.10.1

Buffer: PBS (without Mg²⁺ and Ca²⁺), pH 7.4, 150 mM NaCl, 0.02% sodium azide, 50% glycerol.

Note: This product is for research use only.