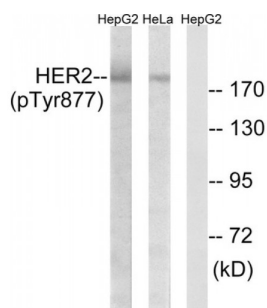


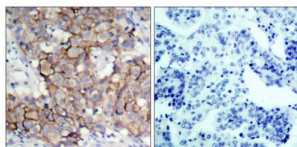
Abbexa Ltd, Innovation Centre, Cambridge Science Park, Cambridge, CB4 0EY, UK
Telephone: +44 (0) 1223 755950 - Fax: +44 (0) 1223 755951 - E-Mail: info@abbexa.com

Receptor Tyrosine-Protein Kinase ErbB-2 (ERBB2) Antibody

Catalogue No.: abx012543



Western blot analysis of extracts from HeLa cells and HepG2 cells, using HER2 (Phospho-Tyr877) Antibody.



Immunohistochemical analysis of paraffin-embedded breast carcinoma, using HER2 (Phospho-Tyr877) Antibody. Left: Untreated; Right: Treated with synthesized phosphopeptide.

Rabbit polyclonal antibody against HER2 protein. Immunogen region is Internal. Specificity is as follows for the reactive species: H:Y877, M:Y878, R:Y879.

Target: HER2

Reactivity: Human, Mouse, Rat

Host: Rabbit

Clonality: Polyclonal

Tested Applications: ELISA, WB, IHC, IP

Recommended dilutions: WB: 1/500 - 1/3000, IHC: 1/50 - 1/100, ELISA: 1/10000. Optimal dilutions/concentrations should be determined by the end user.

Immunogen: The antiserum was produced against synthesized phosphopeptide derived from human HER2 around the phosphorylation site of Tyrosine 877 (T-E-YP-H-A).

Purification: Purified from rabbit antiserum by affinity chromatography using epitope-specific immunogen.

Form: Liquid

Isotype: IgG

Abbexa Ltd, Innovation Centre, Cambridge Science Park, Cambridge, CB4 0EY, UK
Telephone: +44 (0) 1223 755950 - Fax: +44 (0) 1223 755951 - E-Mail: info@abbexa.com

Conjugation: Unconjugated

Storage: Aliquot and store at -20 °C. Avoid repeated freeze/thaw cycles.

Swiss Prot: [P04626](#)

Buffer: PBS (without Mg²⁺ and Ca²⁺), pH 7.4, 150 mM NaCl, 0.02% sodium azide, 50% glycerol.

Note: This product is for research use only.