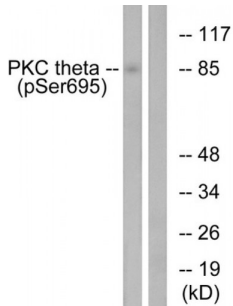


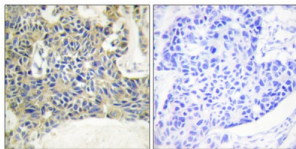
Abbexa Ltd, Innovation Centre, Cambridge Science Park, Cambridge, CB4 0EY, UK
 Telephone: +44 (0) 1223 755950 - Fax: +44 (0) 1223 755951 - E-Mail: info@abbexa.com

PKC theta (Phospho-Ser695) Antibody

Catalogue No.: abx012472



Western blot analysis of extracts from Jurkat cells, treated with EGF (200ng/ml, 15mins), using PKC theta (Phospho-Ser695) antibody.



Immunohistochemistry analysis of paraffin-embedded human breast carcinoma tissue using PKC theta (Phospho-Ser695) antibody.

Rabbit polyclonal antibody against PKC theta protein. Immunogen region is C-terminal. Specificity is as follows for the reactive species: H:S695.

Target:	PKC theta
Reactivity:	Human
Host:	Rabbit
Clonality:	Polyclonal
Tested Applications:	ELISA, WB, IHC
Recommended dilutions:	WB: 1/500 - 1/3000, IHC: 1/50 - 1/100, ELISA: 1/5000. Optimal dilutions/concentrations should be determined by the end user.
Immunogen:	The antiserum was produced against synthesized phosphopeptide derived from human PKC theta around the phosphorylation site of serine 695 (N-F-SP-F-M).
Purification:	Purified from rabbit antiserum by affinity chromatography using epitope-specific immunogen.
Form:	Liquid
Isotype:	IgG

Abbexa Ltd, Innovation Centre, Cambridge Science Park, Cambridge, CB4 0EY, UK
Telephone: +44 (0) 1223 755950 - Fax: +44 (0) 1223 755951 - E-Mail: info@abbexa.com

Conjugation: Unconjugated

Storage: Aliquot and store at -20 °C. Avoid repeated freeze/thaw cycles.

Swiss Prot: [Q04759](#)

Enzyme Commission Number: EC 2.7.11.13

Buffer: PBS (without Mg²⁺ and Ca²⁺), pH 7.4, 150 mM NaCl, 0.02% sodium azide, 50% glycerol.

Note: This product is for research use only.