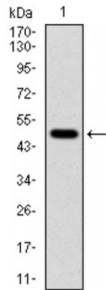


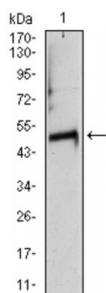
Abbexa Ltd, Innovation Centre, Cambridge Science Park, Cambridge, CB4 0EY, UK
Telephone: +44 (0) 1223 755950 - Fax: +44 (0) 1223 755951 - E-Mail: info@abbexa.com

Tubulin Alpha-8 Chain (TUBA8) Antibody

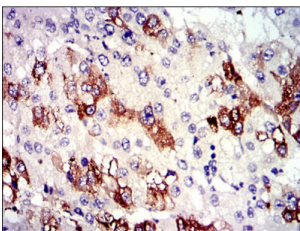
Catalogue No.: abx011988



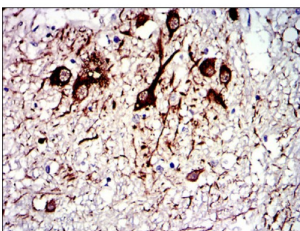
Western blot analysis using TUBA8 antibody against human TUBA8 (AA: 294-449) recombinant protein. (Expected MW is 50 kDa).



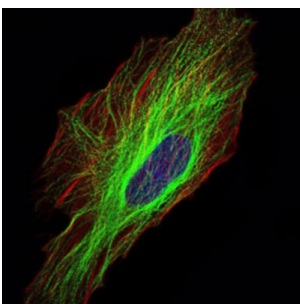
Western blot analysis using TUBA8 antibody against rat heart (1) tissue lysate.



Immunohistochemical analysis of paraffin-embedded medulla oblongata tissues using TUBA8 antibody with DAB staining.

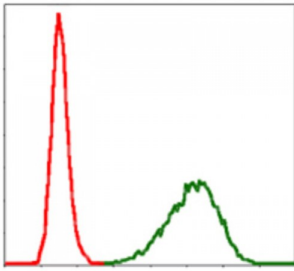


Immunohistochemical analysis of paraffin-embedded liver cancer tissues using TUBA8 antibody with DAB staining.

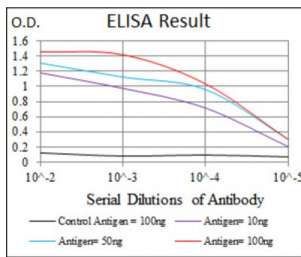


Immunofluorescence analysis of HeLa cells using TUBA8 antibody (green). Blue: DRAQ5 fluorescent DNA dye. Red: Actin filaments have been labeled with Alexa Fluor-555 phalloidin.

Abbexa Ltd, Innovation Centre, Cambridge Science Park, Cambridge, CB4 0EY, UK
Telephone: +44 (0) 1223 755950 - Fax: +44 (0) 1223 755951 - E-Mail: info@abbexa.com



Flow cytometric analysis of NIH/3T3 cells using TUBA8 antibody (green) and negative control (red).



Red: Control Antigen (100ng) ; Purple: Antigen (10ng) ; Green: Antigen (50ng) ; Blue: Antigen (100ng).

This gene encodes a member of the alpha tubulin protein family. alpha tubulins are one of two core protein families (alpha and beta tubulins) that heterodimerize and assemble to form microtubules. Mutations in this gene are associated with polymicrogyria and optic nerve hypoplasia. Alternate splicing results in multiple transcript variants.

Target: TUBA8

Reactivity: Human, Rat

Host: Mouse

Clonality: Monoclonal

Tested Applications: ELISA, WB, IHC, IF/ICC, FCM

Recommended dilutions: ELISA: 1/10000, WB: 1/500 - 1/2000, IHC: 1/200 - 1/1000, IF/ICC: 1/200 - 1/1000, FCM: 1/200 - 1/400. Optimal dilutions/concentrations should be determined by the end user.

Immunogen: Purified recombinant fragment of human TUBA8 expressed in E. Coli.

Purification: Unpurified Ascites.

Isotype: IgG_{2b}

Conjugation: Unconjugated

Storage: Aliquot and store at -20 °C. Avoid repeated freeze/thaw cycles.

Abbexa Ltd, Innovation Centre, Cambridge Science Park, Cambridge, CB4 0EY, UK
Telephone: +44 (0) 1223 755950 - Fax: +44 (0) 1223 755951 - E-Mail: info@abbexa.com

Molecular Weight: 50 kDa

Swiss Prot: [Q9NY65](#)

GeneID: [51807](#)

Buffer: Ascitic fluid containing 0.03% sodium azide.

Note: This product is for research use only.