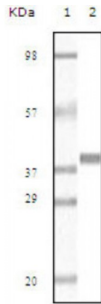


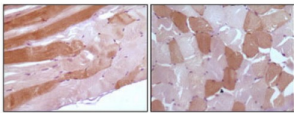
Abbexa Ltd, Innovation Centre, Cambridge Science Park, Cambridge, CB4 0EY, UK
Telephone: +44 (0) 1223 755950 - Fax: +44 (0) 1223 755951 - E-Mail: info@abbexa.com

Myoglobin (MB) Antibody

Catalogue No.: abx011221



Western blot analysis using Myoglobin antibody against truncated Myoglobin recombinant protein (AA: 2-154).



Immunohistochemical analysis of paraffin-embedded human skeletal muscle tissue showing cytoplasmic localization using anti-Myoglobin antibody with DAB staining.

Myoglobin (MB), with 154-amino acid protein (about 17kDa), is a member of the globin superfamily and expression of myoglobin is highest in skeletal and cardiac muscle. Functionally, myoglobin is well accepted as an O₂-storage protein in muscle, capable of releasing O₂ during periods of hypoxia or anoxia. Myoglobin is also thought to buffer intracellular O₂ concentration when muscle activity increases and to facilitate intracellular O₂ diffusion by providing a parallel path that augments simple diffusion of dissolved O₂. Furthermore, myoglobin is used together with cTnl or cTnT in clinical practise for better specificity in AMI diagnosis.

Target: Myoglobin

Reactivity: Human

Host: Mouse

Clonality: Monoclonal

Tested Applications: ELISA, WB, IHC

Recommended dilutions: ELISA: 1/10000, WB: 1/500 - 1/2000, IHC: 1/200 - 1/1000. Optimal dilutions/concentrations should be determined by the end user.

Immunogen: Purified recombinant fragment of Myoglobin expressed in E. Coli.

Purification: Purified antibody

Abbexa Ltd, Innovation Centre, Cambridge Science Park, Cambridge, CB4 0EY, UK
Telephone: +44 (0) 1223 755950 - Fax: +44 (0) 1223 755951 - E-Mail: info@abbexa.com

Isotype:	IgG ₁
Conjugation:	Unconjugated
Storage:	Aliquot and store at -20 °C. Avoid repeated freeze/thaw cycles.
Molecular Weight:	17 kDa
Swiss Prot:	P02144
GeneID:	4151
Gene Symbol:	MB
OMIM:	160000
HGNC:	6915
Ensembl:	ENSG00000198125
Concentration:	1.0 mg/ml
Buffer:	PBS containing 0.03% sodium azide.
Note:	This product is for research use only.