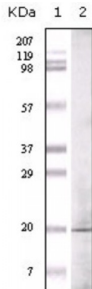


Glucagon-Like Peptide-1 (GLP) Antibody

Catalogue No.: abx010841



Western blot analysis using GLP antibody against GLP recombinant protein.

Glucagon-like peptide-1 (GLP-1) is an incretin hormone secreted from enteroendocrine L cells in response to ingested nutrients. The closely related peptides glucagon-like peptide (GLP-1) and glucagon have opposing effects on blood glucose. GLP-1 induces glucose-dependent insulin secretion in the pancreas, while glucagon stimulates gluconeogenesis and glycogenolysis in the liver. Glucagon is processed from a large precursor, proglucagon, in a tissue-specific manner in pancreatic alpha cells. The identification of a hybrid peptide acting as both a GLP-1 agonist and a glucagon antagonist would provide a novel approach for the treatment of type 2 diabetes.

Target:	GLP
Reactivity:	Human
Host:	Mouse
Clonality:	Monoclonal
Tested Applications:	ELISA, WB
Recommended dilutions:	ELISA: 1/10000, WB: 1/500 - 1/2000. Optimal dilutions/concentrations should be determined by the end user.
Immunogen:	Purified recombinant fragment of GLP expressed in E. Coli.
Purification:	Purified antibody
Isotype:	IgG ₁
Conjugation:	Unconjugated
Storage:	Aliquot and store at -20 °C. Avoid repeated freeze/thaw cycles.
Molecular Weight:	20 kDa
Swiss Prot:	P01275

Abbexa Ltd, Innovation Centre, Cambridge Science Park, Cambridge, CB4 0EY, UK
Telephone: +44 (0) 1223 755950 - Fax: +44 (0) 1223 755951 - E-Mail: info@abbexa.com

GeneID: [79813](#)

Gene Symbol: GCG

OMIM: [607001](#)

HGNC: 4191

Ensembl: ENSG00000115263

Concentration: 1.0 mg/ml

Buffer: PBS containing 0.03% sodium azide.

Note: This product is for research use only.