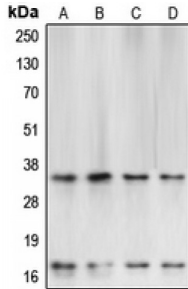
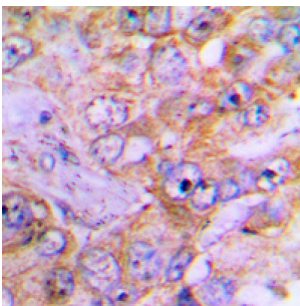


## Caspase 3 (CASP3) Antibody

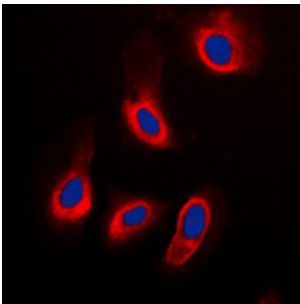
Catalogue No.: abx009512



Western blot analysis of Caspase 3 expression in (A) HeLa, (B) SP2/0, (C) Raw264.7, and (D) rat brain whole cell lysates.



Immunohistochemical analysis of Caspase 3 staining in human lung cancer formalin fixed paraffin embedded tissue section. The section was pre-treated using heat mediated antigen retrieval with sodium citrate buffer (pH 6.0). The section was then incubated with the antibody at room temperature and detected using an HRP conjugated compact polymer system. DAB was used as the chromogen. The section was then counterstained with haematoxylin and mounted with DPX.



Immunofluorescent analysis of Caspase 3 staining in HeLa cells. Formalin-fixed cells were permeabilized with 0.1% Triton X-100 in TBS for 5-10 minutes and blocked with 3% BSA-PBS for 30 minutes at room temperature. Cells were probed with the primary antibody in 3% BSA-PBS and incubated overnight at 4 C in a humidified chamber. Cells were washed with PBST and incubated with a DyLight 594-conjugated secondary antibody (red) in PBS at room temperature in the dark. DAPI was used to stain the cell nuclei (blue).

Caspase 3 Antibody is a Rabbit Polyclonal antibody against Caspase 3.

<b>Target:</b>	Caspase 3
<b>Reactivity:</b>	Human, Mouse, Rat, Cow, Dog, Monkey, Rabbit
<b>Host:</b>	Rabbit
<b>Clonality:</b>	Polyclonal
<b>Tested Applications:</b>	WB, IHC, IF/ICC
<b>Recommended dilutions:</b>	WB: 1/500 - 1/1000, IHC: 1/100 - 1/200, IF/ICC: 1/100 - 1/500. Optimal dilutions/concentrations should be determined by the end user.
<b>Immunogen:</b>	KLH-conjugated synthetic peptide.

Abbexa Ltd, Innovation Centre, Cambridge Science Park, Cambridge, CB4 0EY, UK  
Telephone: +44 (0) 1223 755950 - Fax: +44 (0) 1223 755951 - E-Mail: info@abbexa.com

<b>Epitope Region:</b>	A sequence within the center region of human Caspase 3. The exact sequence is proprietary.
<b>Purification:</b>	The antibody was purified by immunogen affinity chromatography.
<b>Form:</b>	Liquid
<b>Conjugation:</b>	Unconjugated
<b>Specificity:</b>	Recognises endogenous levels of Caspase 3 protein.
<b>Storage:</b>	Shipped at 4 °C. Upon receipt, aliquot and store at -20 °C. Avoid repeated freeze/thaw cycles.
<b>Swiss Prot:</b>	<a href="#"><u>P42574</u></a> <a href="#"><u>P70677</u></a> <a href="#"><u>P55213</u></a>
<b>GeneID:</b>	<a href="#"><u>836</u></a> <a href="#"><u>12367</u></a> <a href="#"><u>25402</u></a>
<b>Gene Symbol:</b>	CASP3
<b>Buffer:</b>	0.42% Potassium phosphate, 0.87% Sodium chloride, pH 7.3, 30% glycerol, and 0.01% sodium azide.
<b>Note:</b>	This product is for research use only.