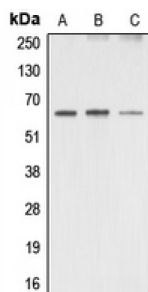
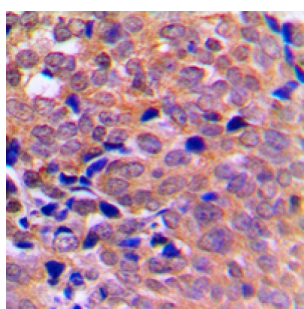


AMPK alpha 1 / 2 Antibody

Catalogue No.: abx008836



Western blot analysis of AMPK alpha 1/2 expression in (A) HeLa, (B) mouse brain, and (C) rat brain whole cell lysates.



Immunohistochemical analysis of AMPK alpha 1/2 staining in human breast cancer formalin fixed paraffin embedded tissue section. The section was pre-treated using heat mediated antigen retrieval with sodium citrate buffer (pH 6.0). The section was then incubated with the antibody at room temperature and detected using an HRP-conjugated compact polymer system. DAB was used as the chromogen. The section was then counterstained with haematoxylin and mounted with DPX.

AMPK alpha 1/2 Antibody is a Rabbit Polyclonal antibody against AMPK alpha 1/2.

Target: AMPK alpha 1/2

Reactivity: Human, Mouse, Rat, Chicken, Pig

Host: Rabbit

Clonality: Polyclonal

Tested Applications: WB, IHC

Recommended dilutions: WB: 1/500 - 1/1000, IHC: 1/100 - 1/200. Optimal dilutions/concentrations should be determined by the end user.

Immunogen: KLH-conjugated synthetic peptide

Epitope Region: Central region of human AMPK alpha 1/2. The exact sequence is proprietary.

Purification: The antibody was purified by immunogen affinity chromatography.

Form: Liquid

Conjugation: Unconjugated

Abbexa Ltd, Innovation Centre, Cambridge Science Park, Cambridge, CB4 0EY, UK
Telephone: +44 (0) 1223 755950 - Fax: +44 (0) 1223 755951 - E-Mail: info@abbexa.com

- Specificity:** Recognises endogenous levels of AMPK alpha 1/2 protein.
- Storage:** Aliquot and store at -20 °C. Avoid repeated freeze/thaw cycles.
- Swiss Prot:** [Q13131](#) [P54646](#) [Q5EG47](#) [Q8BRK8](#) [P54645](#) [Q09137](#)
- GeneID:** [5562](#) [5563](#) [105787](#) [108079](#) [65248](#) [78975](#)
- Gene Symbol:** PRKAA1, PRKAA2
- Buffer:** 0.42% Potassium phosphate, 0.87% Sodium chloride, pH 7.3, 30% glycerol, and 0.01% sodium azide.
- Note:** This product is for research use only.