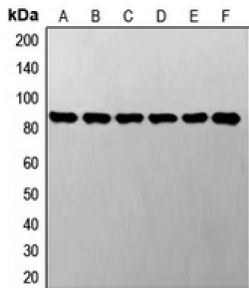
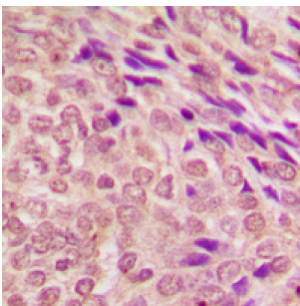


Signal Transducer And Activator of Transcription 3 (STAT3) Antibody

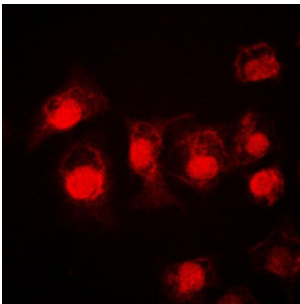
Catalogue No.: abx008676



Western blot analysis of STAT3 expression in (A) A549, (B) LO2, (C) SP2/0, (D) NIH3T3, (E) PC12, and (F) H9C2 whole cell lysates.



Immunohistochemical analysis of STAT3 staining in human breast cancer formalin fixed paraffin embedded tissue section. The section was pre-treated using heat mediated antigen retrieval with sodium citrate buffer (pH 6.0). The section was then incubated with the antibody at room temperature and detected using an HRP conjugated compact polymer system. DAB was used as the chromogen. The section was then counterstained with haematoxylin and mounted with DPX.



Immunofluorescent analysis of STAT3 staining in A549 cells. Formalin-fixed cells were permeabilized with 0.1% Triton X-100 in TBS for 5-10 minutes and blocked with 3% BSA-PBS for 30 minutes at room temperature. Cells were probed with the primary antibody in 3% BSA-PBS and incubated overnight at 4 C in a humidified chamber. Cells were washed with PBST and incubated with a DyLight 594-conjugated secondary antibody (red) in PBS at room temperature in the dark. DAPI was used to stain the cell nuclei (blue).

STAT3 Antibody is a Rabbit Polyclonal antibody against STAT3. Recognizes endogenous levels of STAT3 protein.

Target: STAT3

Reactivity: Human, Mouse, Rat, Cow, Chicken, Dog, Monkey, Pig

Host: Rabbit

Clonality: Polyclonal

Tested Applications: WB, IHC, IF/ICC, IP

Recommended dilutions: WB: 1/500 - 1/1000, IHC: 1/100 - 1/200, IF/ICC: 1/100 - 1/500, IP: 1/10 - 1/100. Optimal dilutions/concentrations should be determined by the end user.

Immunogen: KLH-conjugated synthetic peptide.

Abbexa Ltd, Innovation Centre, Cambridge Science Park, Cambridge, CB4 0EY, UK
Telephone: +44 (0) 1223 755950 - Fax: +44 (0) 1223 755951 - E-Mail: info@abbexa.com

Epitope Region:	C-terminal region of human STAT3. The exact sequence is proprietary.
Purification:	The antibody was purified by immunogen affinity chromatography.
Form:	Liquid
Conjugation:	Unconjugated
Specificity:	Recognises endogenous levels of STAT3 protein.
Storage:	Aliquot and store at -20 °C. Avoid repeated freeze/thaw cycles.
Swiss Prot:	P40763 P42227 P52631
GeneID:	6774 20848 25125
Buffer:	0.42% Potassium phosphate; 0.87% Sodium chloride; pH 7.3; 30% glycerol; and 0.01% sodium azide.
Note:	This product is for research use only.