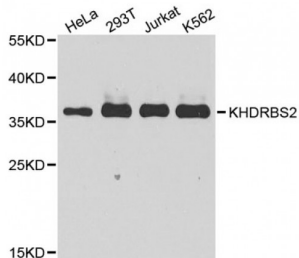


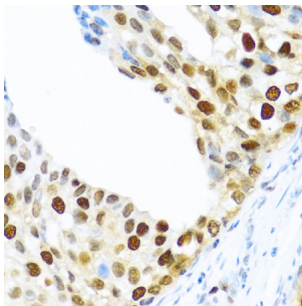
Abbexa Ltd, Innovation Centre, Cambridge Science Park, Cambridge, CB4 0EY, UK
 Telephone: +44 (0) 1223 755950 - Fax: +44 (0) 1223 755951 - E-Mail: info@abbexa.com

KH Domain-Containing, RNA-Binding, Signal Transduction-Associated Protein 2 (KHDRBS2) Antibody

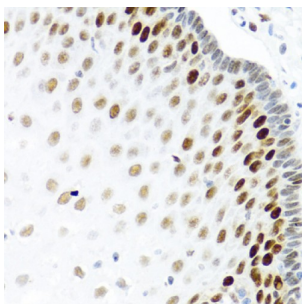
Catalogue No.: abx007227



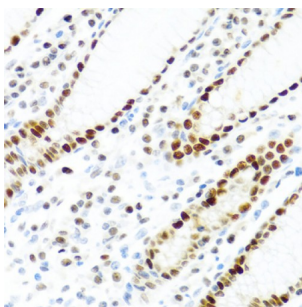
Western blot analysis of extracts of various cell lines, using KHDRBS2 antibody (abx007227) at 1/1000 dilution.



Immunohistochemistry of paraffin-embedded human prostate cancer using KHDRBS2 antibody (abx007227) at dilution of 1/100 (40x lens).



Immunohistochemistry of paraffin-embedded human esophagus using KHDRBS2 antibody (abx007227) at dilution of 1/100 (40x lens).



Immunohistochemistry of paraffin-embedded human stomach using KHDRBS2 antibody (abx007227) at dilution of 1/100 (40x lens).

KHDRBS2 Antibody is a Rabbit Polyclonal Antibody against KHDRBS2.

Target: KHDRBS2

Reactivity: Human

Abbexa Ltd, Innovation Centre, Cambridge Science Park, Cambridge, CB4 0EY, UK
Telephone: +44 (0) 1223 755950 - Fax: +44 (0) 1223 755951 - E-Mail: info@abbexa.com

Host:	Rabbit
Clonality:	Polyclonal
Tested Applications:	WB, IHC
Recommended dilutions:	WB: 1/500 - 1/1000, IHC: 1/100 - 1/200. Optimal dilutions/concentrations should be determined by the end user.
Purification:	Affinity purified.
Form:	Liquid
Isotype:	IgG
Conjugation:	Unconjugated
Storage:	Aliquot and store at -20 °C. Avoid repeated freeze/thaw cycles.
Molecular Weight:	Calculated MW: 38 kDa Observed MW: 36 kDa
Swiss Prot:	Q5VWX1
GeneID:	202559
Gene Symbol:	KHDRBS2
Concentration:	> 1 mg/ml
Buffer:	PBS, pH 7.3, 0.02% sodium azide, 50% glycerol.
Note:	This product is for research use only.