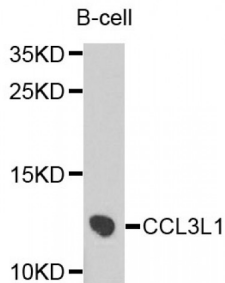


Abbexa Ltd, Innovation Centre, Cambridge Science Park, Cambridge, CB4 0EY, UK
Telephone: +44 (0) 1223 755950 - Fax: +44 (0) 1223 755951 - E-Mail: info@abbexa.com

Chemokine C-C-Motif Ligand 3 Like Protein 1 (CCL3L1) Antibody

Catalogue No.: abx007203



Western blot analysis of extracts of B-cell cells, using CCL3L1 antibody (abx007203) at 1/1000 dilution.

CCL3L1 Antibody is a Rabbit Polyclonal Antibody against CCL3L1.

Target: CCL3L1

Reactivity: Human

Host: Rabbit

Clonality: Polyclonal

Tested Applications: WB

Recommended dilutions: WB: 1/200 - 1/500. Optimal dilutions/concentrations should be determined by the end user.

Purification: Affinity purified.

Form: Liquid

Isotype: IgG

Conjugation: Unconjugated

Storage: Aliquot and store at -20 °C. Avoid repeated freeze/thaw cycles.

Molecular Weight: Calculated MW: 10 kDa
Observed MW: 12 kDa

Swiss Prot: [P16619](#)

GenID: [6349](#)

Gene Symbol: CCL3L1

Abbexa Ltd, Innovation Centre, Cambridge Science Park, Cambridge, CB4 0EY, UK
Telephone: +44 (0) 1223 755950 - Fax: +44 (0) 1223 755951 - E-Mail: info@abbexa.com

Concentration: > 1 mg/ml

Buffer: PBS, pH 7.3, 0.02% sodium azide, 50% glycerol.

Note: This product is for research use only.