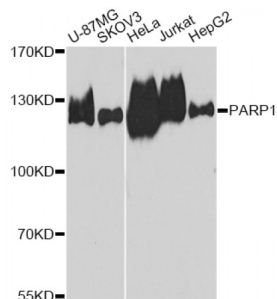


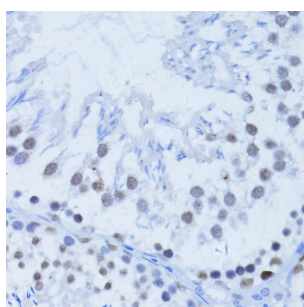
Abbexa Ltd, Innovation Centre, Cambridge Science Park, Cambridge, CB4 0EY, UK
Telephone: +44 (0) 1223 755950 - Fax: +44 (0) 1223 755951 - E-Mail: info@abbexa.com

Poly ADP-Ribose Polymerase 1 (PARP1) Antibody

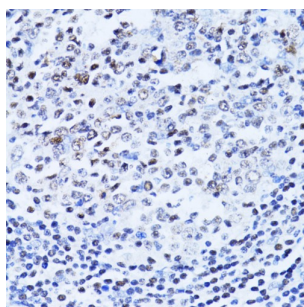
Catalogue No.: abx007196



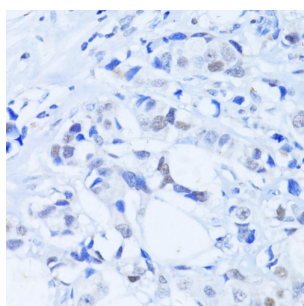
Western blot analysis of extracts of various cell lines, using PARP1 antibody (abx007196) at 1/1000 dilution.



Immunohistochemistry of paraffin-embedded rat testis using PARP1 Antibody (abx007196) at dilution of 1/100 (40x lens).



Immunohistochemistry of paraffin-embedded human vermiform appendix using PARP1 Antibody (abx007196) at dilution of 1/100 (40x lens).



Immunohistochemistry of paraffin-embedded human breast cancer using PARP1 Antibody (abx007196) at dilution of 1/100 (40x lens).

PARP1 Antibody is a Rabbit Polyclonal Antibody against PARP1.

Target: PARP1

Reactivity: Human, Rat

Host: Rabbit

Abbexa Ltd, Innovation Centre, Cambridge Science Park, Cambridge, CB4 0EY, UK
Telephone: +44 (0) 1223 755950 - Fax: +44 (0) 1223 755951 - E-Mail: info@abbexa.com

Clonality: Polyclonal

Tested Applications: WB, IHC

Recommended dilutions: WB: 1/1000 - 1/3000, IHC: 1/50 - 1/200. Optimal dilutions/concentrations should be determined by the end user.

Purification: Affinity purified.

Form: Liquid

Isotype: IgG

Conjugation: Unconjugated

Storage: Aliquot and store at -20 °C. Avoid repeated freeze/thaw cycles.

Molecular Weight: Calculated MW: 113 kDa
Observed MW: 115 kDa

Swiss Prot: [P09874](#)

GeneID: [142](#)

Gene Symbol: PARP1

Concentration: > 1 mg/ml

Buffer: PBS, pH 7.3, 0.02% sodium azide, 50% glycerol.

Note: This product is for research use only.