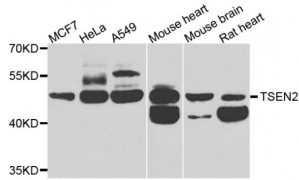


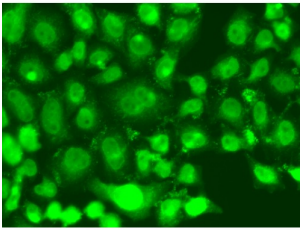
Abbexa Ltd, Innovation Centre, Cambridge Science Park, Cambridge, CB4 0EY, UK  
 Telephone: +44 (0) 1223 755950 - Fax: +44 (0) 1223 755951 - E-Mail: info@abbexa.com

## tRNA-Splicing Endonuclease Subunit Sen2 (TSEN2) Antibody

Catalogue No.: abx007157



Western blot analysis of extracts of various cell lines, using TSEN2 antibody (abx007157) at 1/1000 dilution.



Immunofluorescence analysis of A549 cells using TSEN2 antibody (abx007157).

TSEN2 Antibody is a Rabbit Polyclonal Antibody against TSEN2.

**Target:** TSEN2

**Reactivity:** Human, Mouse, Rat

**Host:** Rabbit

**Clonality:** Polyclonal

**Tested Applications:** WB, IF/ICC

**Recommended dilutions:** WB: 1/500 - 1/2000, IF/ICC: 1/50 - 1/100. Optimal dilutions/concentrations should be determined by the end user.

**Purification:** Affinity purified.

**Form:** Liquid

**Isotype:** IgG

**Conjugation:** Unconjugated

**Storage:** Aliquot and store at -20 °C. Avoid repeated freeze/thaw cycles.

Abbexa Ltd, Innovation Centre, Cambridge Science Park, Cambridge, CB4 0EY, UK  
Telephone: +44 (0) 1223 755950 - Fax: +44 (0) 1223 755951 - E-Mail: [info@abbexa.com](mailto:info@abbexa.com)

**Molecular Weight:** Calculated MW: 45 kDa/47 kDa/49 kDa/51 kDa/53 kDa  
Observed MW: 53 kDa

**Swiss Prot:** [Q8NCE0](#)

**GeneID:** [80746](#)

**Gene Symbol:** TSEN2

**Concentration:** > 1 mg/ml

**Buffer:** PBS, pH 7.3, 0.02% sodium azide, 50% glycerol.

**Note:** This product is for research use only.