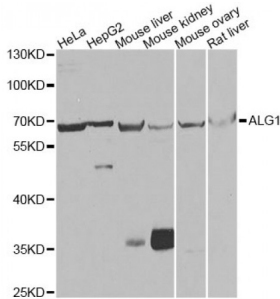
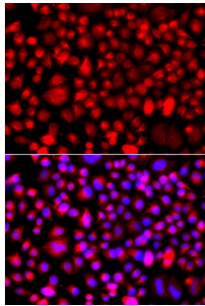


ALG1, Chitobiosyldiphosphodolichol Beta-Mannosyltransferase (ALG1) Antibody

Catalogue No.: abx007156



Western blot analysis of extracts of various cell lines, using ALG1 antibody (abx007156) at 1/1000 dilution.



Immunofluorescence analysis of A549 cells using ALG1 antibody (abx007156). Blue: DAPI for nuclear staining.

ALG1 Antibody is a Rabbit Polyclonal Antibody against ALG1.

Target: ALG1

Reactivity: Human, Mouse, Rat

Host: Rabbit

Clonality: Polyclonal

Tested Applications: WB, IF/ICC

Recommended dilutions: WB: 1/500 - 1/2000, IF/ICC: 1/50 - 1/100. Optimal dilutions/concentrations should be determined by the end user.

Purification: Affinity purified.

Form: Liquid

Isotype: IgG

Conjugation: Unconjugated

Abbexa Ltd, Innovation Centre, Cambridge Science Park, Cambridge, CB4 0EY, UK
Telephone: +44 (0) 1223 755950 - Fax: +44 (0) 1223 755951 - E-Mail: info@abbexa.com

Storage: Aliquot and store at -20 °C. Avoid repeated freeze/thaw cycles.

Molecular Weight: Calculated MW: 40 kDa/52 kDa
Observed MW: 60 kDa

Swiss Prot: [Q9BT22](#)

GeneID: [56052](#)

Gene Symbol: ALG1

Concentration: > 1 mg/ml

Buffer: PBS, pH 7.3, 0.02% sodium azide, 50% glycerol.

Note: This product is for research use only.