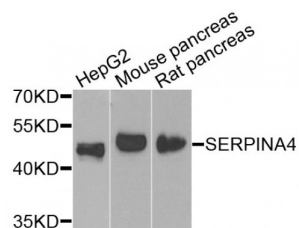


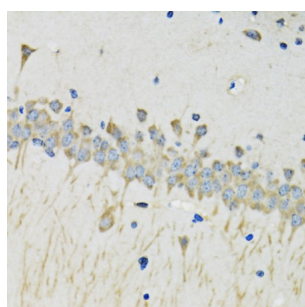
Abbexa Ltd, Innovation Centre, Cambridge Science Park, Cambridge, CB4 0EY, UK
Telephone: +44 (0) 1223 755950 - Fax: +44 (0) 1223 755951 - E-Mail: info@abbexa.com

Kallistatin (SERPINA4) Antibody

Catalogue No.: abx007140



Western blot analysis of extracts of various cell lines, using SERPINA4 antibody (abx007140) at 1/1000 dilution.



Immunohistochemistry of paraffin-embedded mouse brain using SERPINA4 antibody (abx007140) at dilution of 1/100 (40x lens).

SERPINA4 Antibody is a Rabbit Polyclonal Antibody against SERPINA4.

Target: SERPINA4

Reactivity: Human, Mouse, Rat

Host: Rabbit

Clonality: Polyclonal

Tested Applications: WB, IHC, IF/ICC

Recommended dilutions: WB: 1/500 - 1/2000, IHC: 1/50 - 1/200, IF/ICC: 1/50 - 1/100. Optimal dilutions/concentrations should be determined by the end user.

Purification: Affinity purified.

Form: Liquid

Isotype: IgG

Conjugation: Unconjugated

Storage: Aliquot and store at -20 °C. Avoid repeated freeze/thaw cycles.

Abbexa Ltd, Innovation Centre, Cambridge Science Park, Cambridge, CB4 0EY, UK
Telephone: +44 (0) 1223 755950 - Fax: +44 (0) 1223 755951 - E-Mail: info@abbexa.com

Molecular Weight: Calculated MW: 48 kDa
Observed MW: 49 kDa

Swiss Prot: [P29622](#)

GeneID: [5267](#)

Gene Symbol: SERPINA4

Concentration: > 1 mg/ml

Buffer: PBS, pH 7.3, 0.02% sodium azide, 50% glycerol.

Note: This product is for research use only.