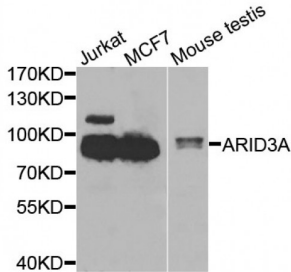


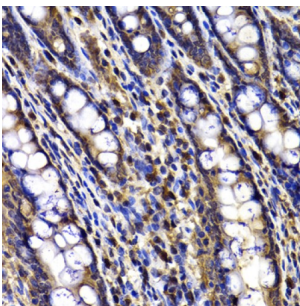
Abbexa Ltd, Innovation Centre, Cambridge Science Park, Cambridge, CB4 0EY, UK
 Telephone: +44 (0) 1223 755950 - Fax: +44 (0) 1223 755951 - E-Mail: info@abbexa.com

AT-Rich Interactive Domain Containing Protein 3A (ARID3A) Antibody

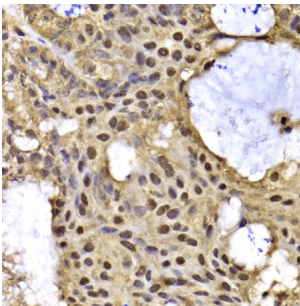
Catalogue No.: abx007038



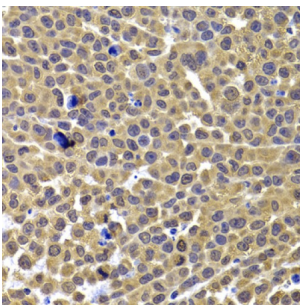
Western blot analysis of extracts of various cell lines, using ARID3A antibody (abx007038) at 1/1000 dilution.



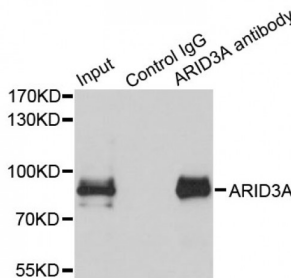
Immunohistochemistry of paraffin-embedded rat ileum using ARID3A antibody (abx007038) at dilution of 1/100 (40x lens).



Immunohistochemistry of paraffin-embedded human oophoroma using ARID3A antibody (abx007038) at dilution of 1/100 (40x lens).



Immunohistochemistry of paraffin-embedded mouse cancer using ARID3A antibody (abx007038) at dilution of 1/100 (40x lens).



Immunoprecipitation analysis of 150 µg extracts of MCF7 cells using 3 µg ARID3A antibody (abx007038). Western blot was performed from the immunoprecipitate using ARID3A antibody (abx007038) at a dilution of 1/500.

ARID3A Antibody is a Rabbit Polyclonal Antibody against ARID3A.

Abbexa Ltd, Innovation Centre, Cambridge Science Park, Cambridge, CB4 0EY, UK
Telephone: +44 (0) 1223 755950 - Fax: +44 (0) 1223 755951 - E-Mail: info@abbexa.com

Target:	ARID3A
Reactivity:	Human, Mouse, Rat
Host:	Rabbit
Clonality:	Polyclonal
Tested Applications:	WB, IHC, IP
Recommended dilutions:	WB: 1/500 - 1/2000, IHC: 1/50 - 1/200, IP: 1/20 - 1/50. Optimal dilutions/concentrations should be determined by the end user.
Purification:	Affinity purified.
Form:	Liquid
Isotype:	IgG
Conjugation:	Unconjugated
Storage:	Aliquot and store at -20 °C. Avoid repeated freeze/thaw cycles.
Molecular Weight:	Calculated MW: 62 kDa Observed MW: 100 kDa
Swiss Prot:	Q99856
GeneID:	1820
Gene Symbol:	ARID3A
Concentration:	> 1 mg/ml
Buffer:	PBS, pH 7.3, 0.02% sodium azide, 50% glycerol.
Note:	This product is for research use only.