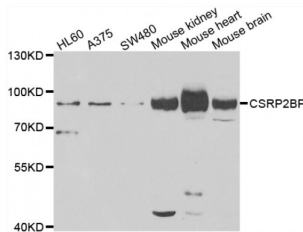


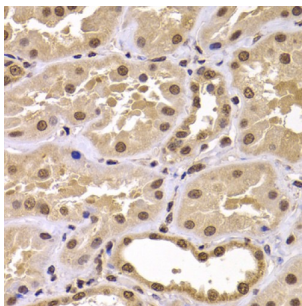
Abbexa Ltd, Innovation Centre, Cambridge Science Park, Cambridge, CB4 0EY, UK
 Telephone: +44 (0) 1223 755950 - Fax: +44 (0) 1223 755951 - E-Mail: info@abbexa.com

Cysteine-Rich Protein 2-Binding Protein (CSRP2BP) Antibody

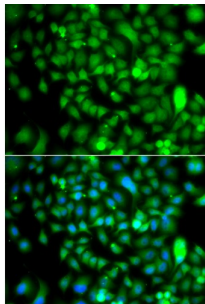
Catalogue No.: abx006935



Western blot analysis of extracts of various cell lines, using CSRP2BP antibody (abx006935) at 1/1000 dilution.



Immunohistochemistry of paraffin-embedded human kidney using CSRP2BP antibody (abx006935) at dilution of 1/100 (40x lens).



Immunofluorescence analysis of A549 cells using CSRP2BP antibody (abx006935). Blue: DAPI for nuclear staining.

CSRP2BP Antibody is a Rabbit Polyclonal Antibody against CSRP2BP.

Target: Cysteine And Glycine Rich Protein 2 Binding Protein (CSRP2BP)

Reactivity: Human, Mouse, Rat

Host: Rabbit

Clonality: Polyclonal

Tested Applications: WB, IHC, IF/ICC

Recommended dilutions: WB: 1/500 - 1/2000, IHC: 1/50 - 1/200, IF/ICC: 1/50 - 1/200. Optimal dilutions/concentrations should be determined by the end user.

Purification: Affinity purified.

Abbexa Ltd, Innovation Centre, Cambridge Science Park, Cambridge, CB4 0EY, UK
Telephone: +44 (0) 1223 755950 - Fax: +44 (0) 1223 755951 - E-Mail: info@abbexa.com

Form:	Liquid
Isotype:	IgG
Conjugation:	Unconjugated
Storage:	Aliquot and store at -20 °C. Avoid repeated freeze/thaw cycles.
Molecular Weight:	Calculated MW: 74 kDa/88 kDa Observed MW: 89 kDa
Swiss Prot:	Q9H8E8
GeneID:	57325
Gene Symbol:	CSRP2BP
Concentration:	> 1 mg/ml
Buffer:	PBS, pH 7.3, 0.02% sodium azide, 50% glycerol.
Note:	This product is for research use only.