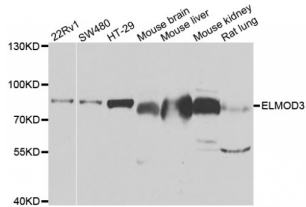


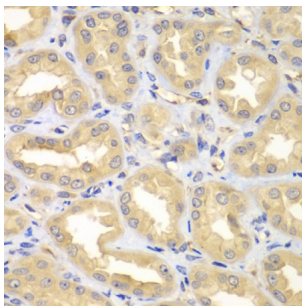
Abbexa Ltd, Innovation Centre, Cambridge Science Park, Cambridge, CB4 0EY, UK  
 Telephone: +44 (0) 1223 755950 - Fax: +44 (0) 1223 755951 - E-Mail: info@abbexa.com

## Engulfment And Cell Motility 3 (ELMO3) Antibody

Catalogue No.: abx006909



Western blot analysis of extracts of various cell lines, using ELMO3 antibody (abx006909) at 1/1000 dilution.



Immunohistochemistry of paraffin-embedded human kidney using ELMO3 antibody (abx006909) at dilution of 1/100 (40x lens).

ELMO3 Antibody is a Rabbit Polyclonal Antibody against ELMO3.

**Target:** ELMO3

**Reactivity:** Human, Mouse, Rat

**Host:** Rabbit

**Clonality:** Polyclonal

**Tested Applications:** WB, IHC

**Recommended dilutions:** WB: 1/500 - 1/2000, IHC: 1/50 - 1/200. Optimal dilutions/concentrations should be determined by the end user.

**Purification:** Affinity purified.

**Form:** Liquid

**Isotype:** IgG

**Conjugation:** Unconjugated

**Storage:** Aliquot and store at -20 °C. Avoid repeated freeze/thaw cycles.

Abbexa Ltd, Innovation Centre, Cambridge Science Park, Cambridge, CB4 0EY, UK  
Telephone: +44 (0) 1223 755950 - Fax: +44 (0) 1223 755951 - E-Mail: [info@abbexa.com](mailto:info@abbexa.com)

**Molecular Weight:** Calculated MW: 68 kDa/81 kDa/87 kDa  
Observed MW: 81 kDa

**Swiss Prot:** [Q96BJ8](#)

**GeneID:** [79767](#)

**Gene Symbol:** ELMO3

**Concentration:** > 1 mg/ml

**Buffer:** PBS, pH 7.3, 0.02% sodium azide, 50% glycerol.

**Note:** This product is for research use only.