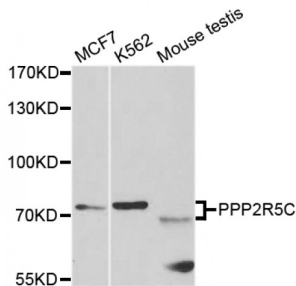


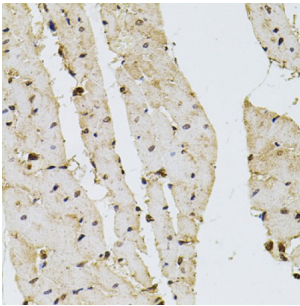
Abbexa Ltd, Innovation Centre, Cambridge Science Park, Cambridge, CB4 0EY, UK
Telephone: +44 (0) 1223 755950 - Fax: +44 (0) 1223 755951 - E-Mail: info@abbexa.com

Serine/threonine-Protein Phosphatase 2A 56 kDa Regulatory Subunit Gamma Isoform (PPP2R5C) Antibody

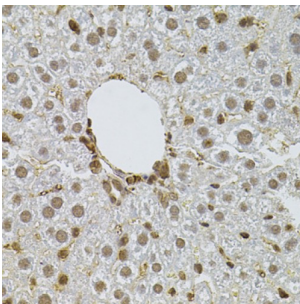
Catalogue No.: abx006784



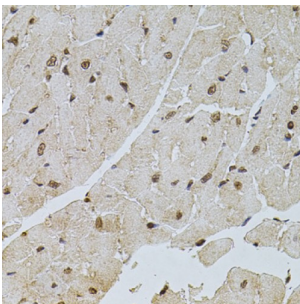
Western blot analysis of extracts of various cell lines, using PPP2R5C antibody (abx006784) at 1/1000 dilution.



Immunohistochemistry of paraffin-embedded rat heart using PPP2R5C antibody (abx006784) at dilution of 1/100 (40x lens).



Immunohistochemistry of paraffin-embedded mouse liver using PPP2R5C antibody (abx006784) at dilution of 1/100 (40x lens).



Immunohistochemistry of paraffin-embedded mouse heart using PPP2R5C antibody (abx006784) at dilution of 1/100 (40x lens).

PPP2R5C Antibody is a Rabbit Polyclonal Antibody against PPP2R5C.

Target: PPP2R5C

Reactivity: Human, Mouse, Rat

Abbexa Ltd, Innovation Centre, Cambridge Science Park, Cambridge, CB4 0EY, UK
Telephone: +44 (0) 1223 755950 - Fax: +44 (0) 1223 755951 - E-Mail: info@abbexa.com

Host:	Rabbit
Clonality:	Polyclonal
Tested Applications:	WB, IHC
Recommended dilutions:	WB: 1/500 - 1/2000, IHC: 1/50 - 1/200. Optimal dilutions/concentrations should be determined by the end user.
Purification:	Affinity purified.
Form:	Liquid
Isotype:	IgG
Conjugation:	Unconjugated
Storage:	Aliquot and store at -20 °C. Avoid repeated freeze/thaw cycles.
Molecular Weight:	Calculated MW: 52 kDa/56 kDa/61 kDa/62 kDa/64 kDa Observed MW: 71 kDa
Swiss Prot:	Q13362
GeneID:	5527
Gene Symbol:	PPP2R5C
Concentration:	> 1 mg/ml
Buffer:	PBS, pH 7.3, 0.02% sodium azide, 50% glycerol.
Note:	This product is for research use only.